

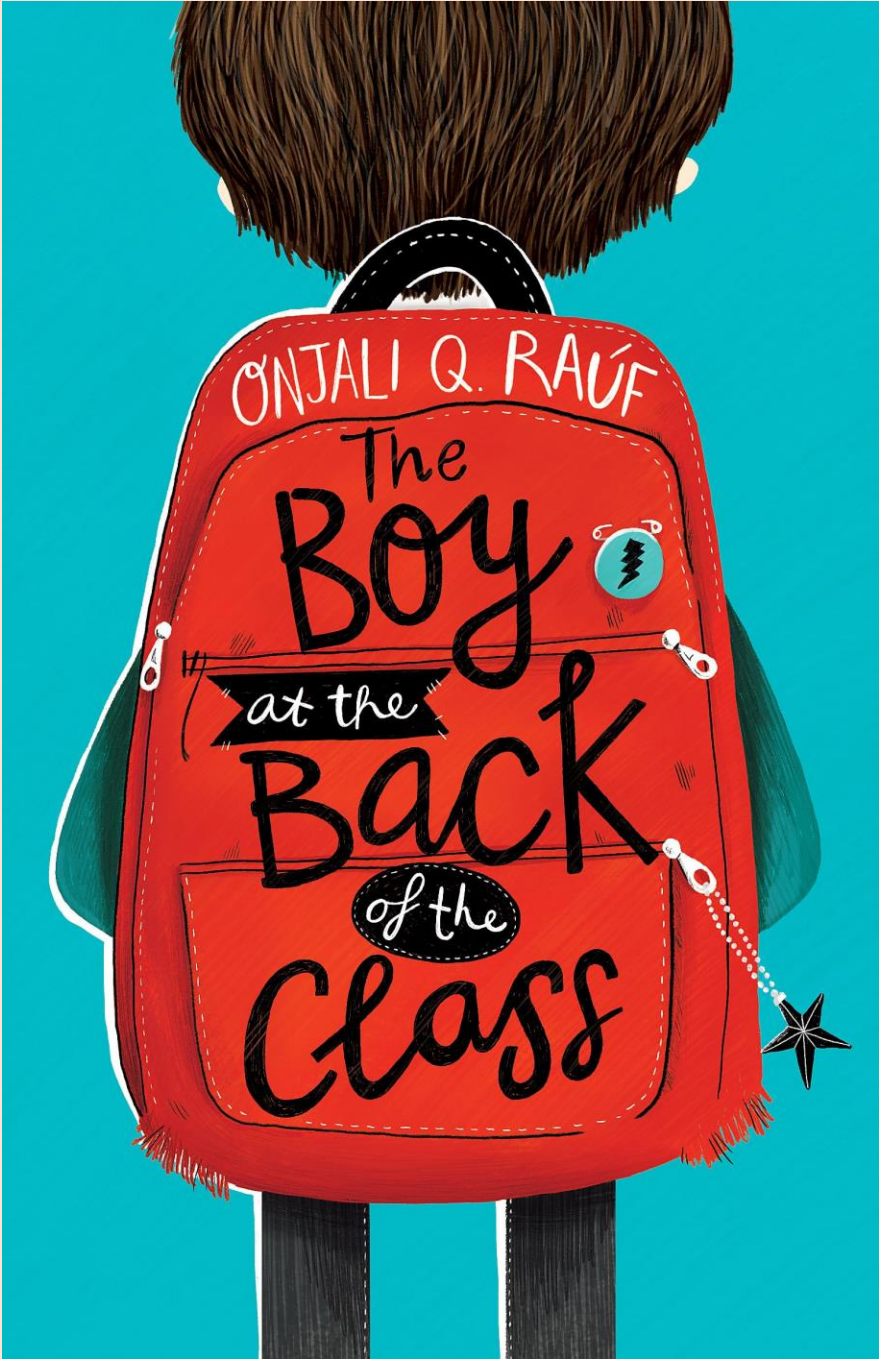
Thursday 25th June Morning Challenge



Pick your favourite moment of Year 6 and either:

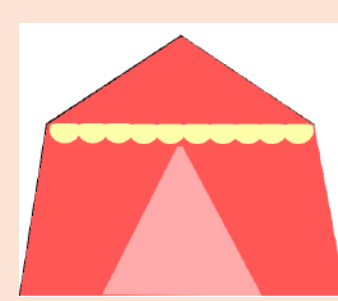
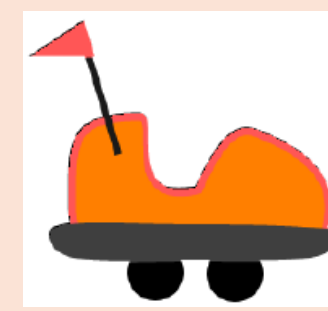
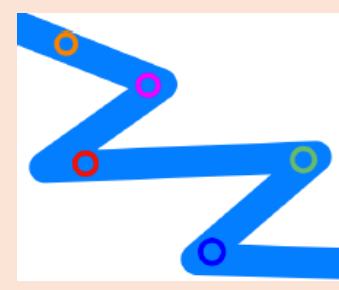
- Sketch the moment so that someone would be able to guess the moment.
- Write clues so that someone would be able to guess the moment.
- Describe the moment with descriptive sentences.

Toast and Class Novel



Thursday 25th June

Theme Park Maths



You are going to design your very own Theme Park!

To do

- Work out the cost of each ride at your park – remember to check if they are Category 1, 2 or 3.
- Price up the toilets, bins and tress too.
- This will give you a total cost for a daily basis.

Task 2: Running your theme park

To run your theme park the following costs will apply to each item that you have every day. How much will it cost to run your theme park for one day?

Costs				
Item	Staff Costs	Electricity, Maintenance and Repairs	Number in park	Total Costs per day
Category 1 Ride (per ride)	£40 a day	£50 a day		
Category 2 Ride (per ride)	£30 a day	£30 a day		
Category 3 Facility (per facility)	£20 a day	£20 a day		
Toilets (for all toilets)	£5 a day	£5 a day	NA	
Bins (for all bins)	£31.50 a week	£5.25 a week	NA	
Trees (for all trees)	£91.25 a year	None	NA	
		Totals		

Thursday 25th June

KQ: How does coastal erosion affect people's lives?

Knowledge Quiz

1 Which of these is a physical coastal feature? Tick **1** correct answer

- pier
- mudflat
- lighthouse
- port

2 Which of these is a human coastal feature? Tick **1** correct answer

- estuary
- spit
- saltmarsh
- port

3 A place with 'point' or 'head' in its name will probably be a _____ Fill in the blank

4 Which coastal feature is usually found in a deep water bay or estuary next to flat land? Tick **1** correct answer

- pier
- lighthouse
- container port

5 Coastal land would be used for tourism when there is: Tick **1** correct answer

- attractive or unique physical features such as beaches
- a deep water bay or estuary next to flat land
- a large stretch of protected inland water with lots of sheltered, deep-water

6 Bays can form natural _____ that can be used as a safe place for fishing boats. Tick **1** correct answer

- piers
- lighthouses
- harbours

Keywords

waves

Waves are the movements of energy across water.

erosion

Erosion is the process of Earth's surface, e.g. rock or soil, being worn away and transported from its original site.

geology

The geology of an area is its physical structure and what rocks and minerals exist there.

Waves are formed by the wind blowing over the surface of the sea.



True or false?

Waves are formed by the gravitational pull of the moon.

T True

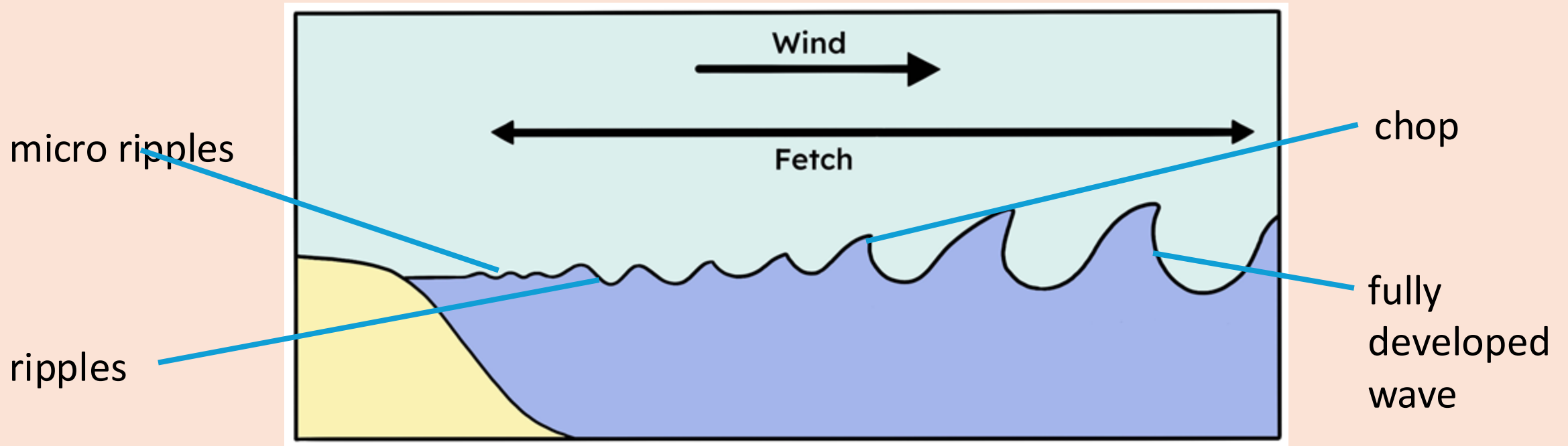
F False ✓

Justify your answer

a **Waves** are created by the spin of Earth.

b **Waves** are created by wind blowing over the sea. ✓

The size of the **wave** depends upon the strength of the wind, the length of time the wind has been blowing and the depth of the water.



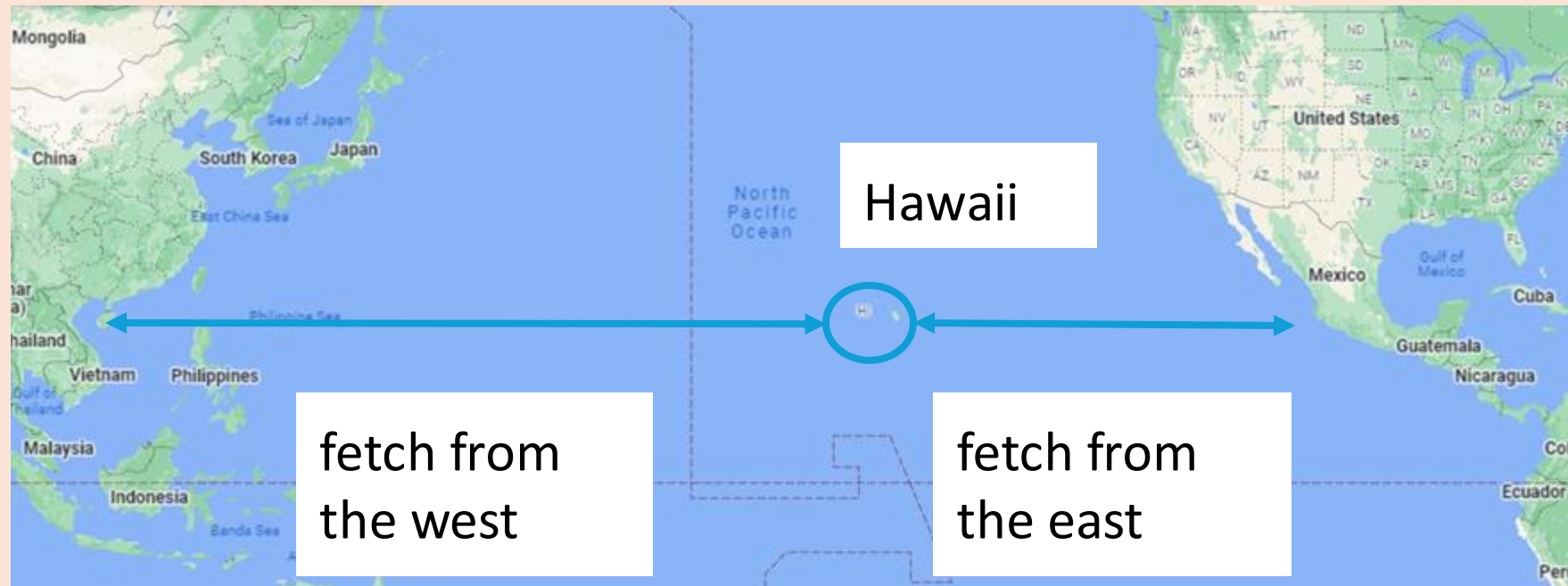
Can you think of places around the world that have big **waves**?

Where do waves come from?



Hawaii has big **waves** because it is surrounded by the Pacific Ocean. In the world's largest ocean wind can travel from all directions for a long time and distance.

The distance the wind travels over an ocean is called the fetch.



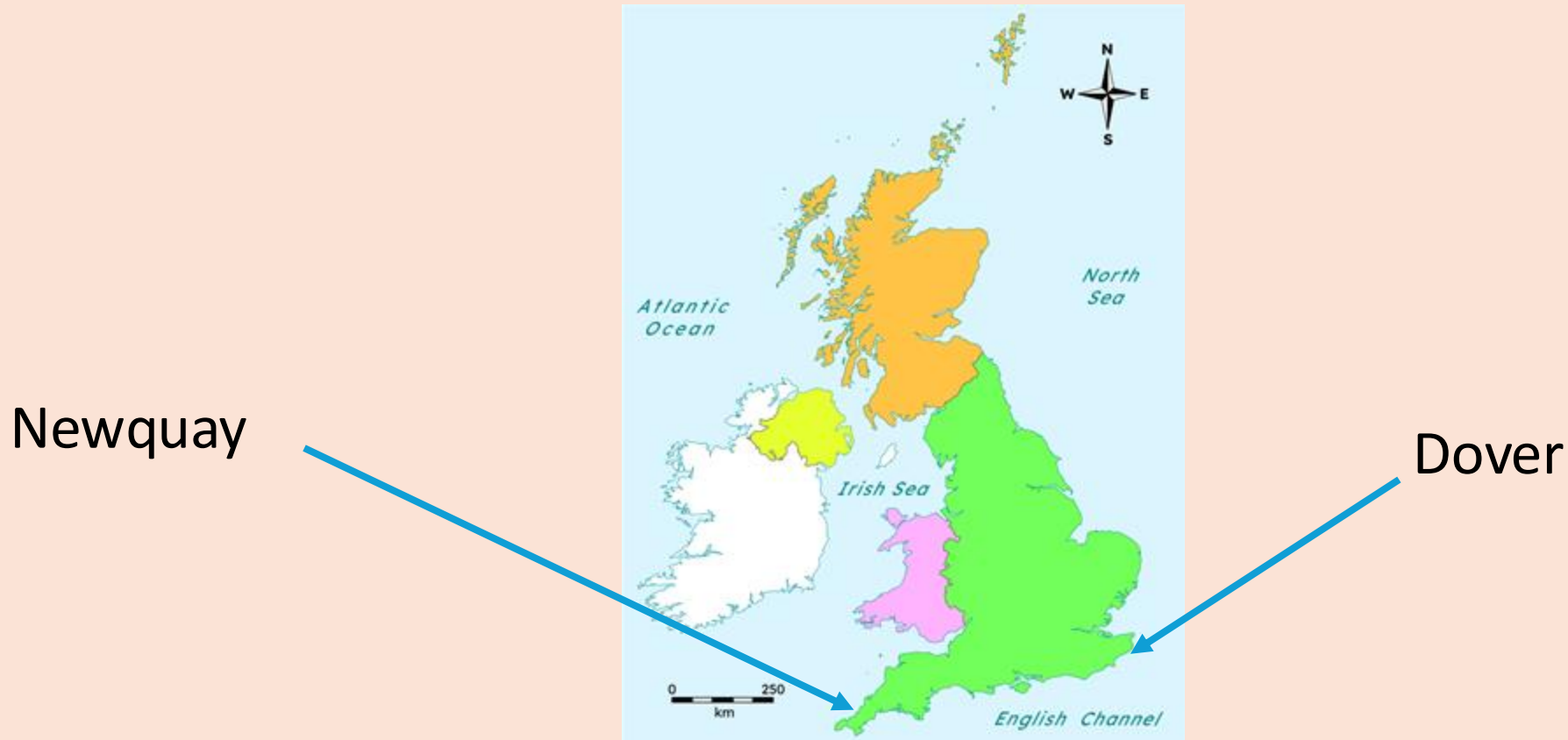


Which two of these factors create large **waves**?

- a** the strength of the wind ✓
- b** the temperature of the wind
- c** the spin of Earth
- d** the length of time the wind has been blowing ✓

Task A Where do waves come from?

Look at which sea or ocean these two coastal locations border and explain which location will usually receive the largest **waves** and which will have the smallest **waves**.



Task A Where do waves come from?



Feedback

Look at which sea or ocean these two coastal locations border and explain which location will usually receive the largest **waves** and which will have the smallest **waves**.

Newquay will usually have the largest **waves** because wind can travel a long way across the Atlantic Ocean



Dover will usually have the smallest **waves** because wind can only travel a short distance across the English Channel

What coastal features are created by erosion?



Explanation

When powerful **waves** hit the shore they cause **erosion** by breaking apart rocks and making cliffs collapse.



What coastal features are created by erosion?



Explanation

Erosion by waves can create features such as caves and arches along a coastline.



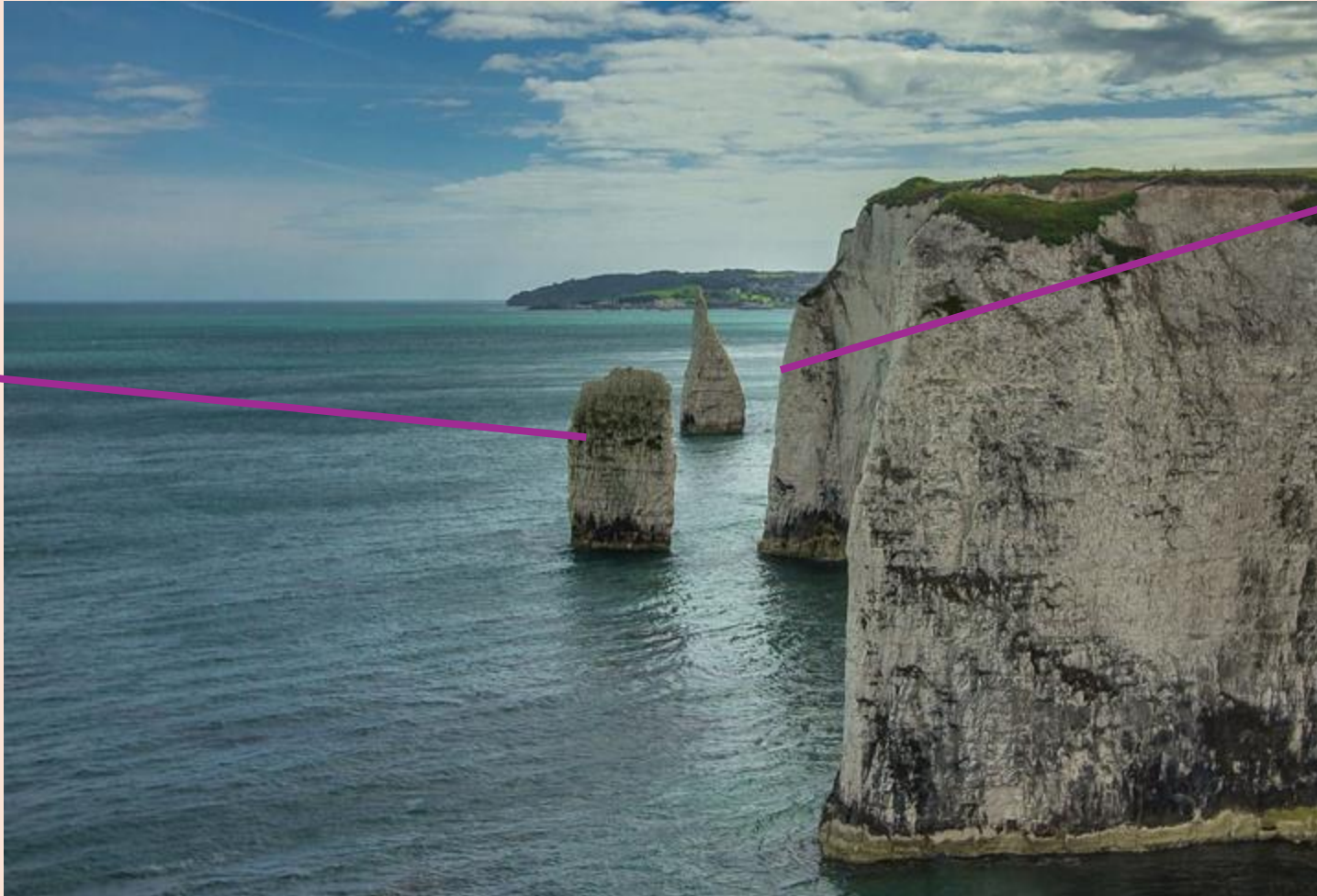
cave



arch

Arches that collapse become a sea stack.

sea stack



the arch would have been here before it collapsed

What coastal features are created by erosion?



Check

Which of the following photographs shows an arch?



a ✓



b



c

What coastal features are created by erosion?



Check

Which of the following photographs shows a cave?



a



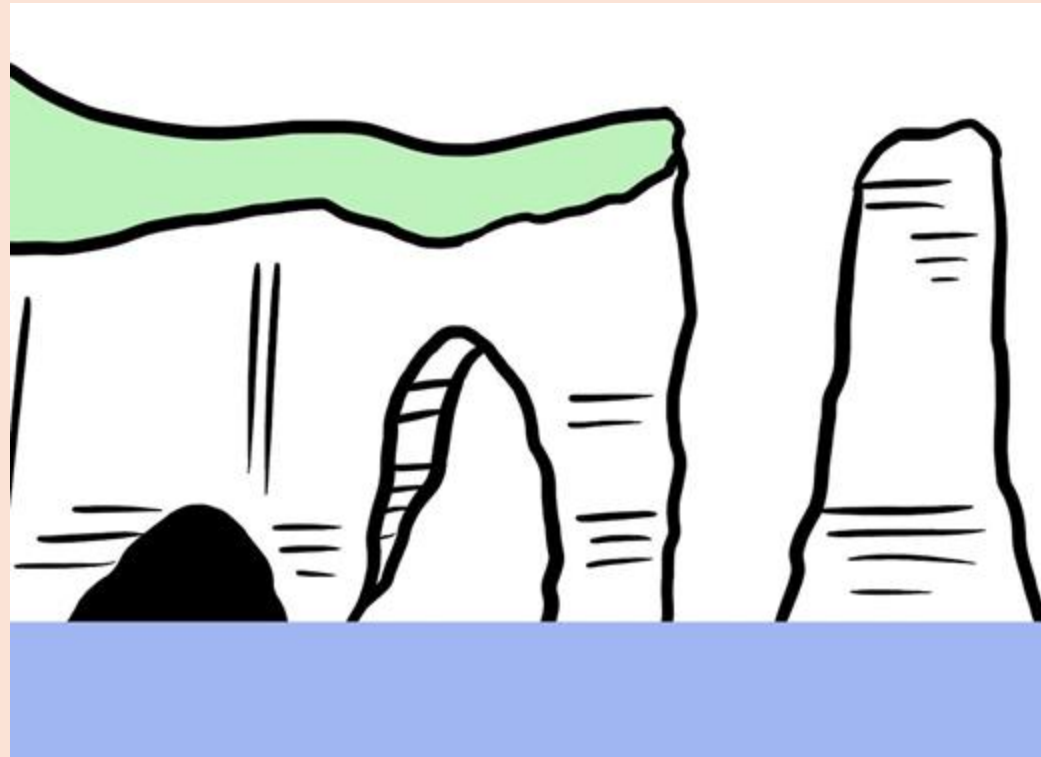
b ✓



c



Label the diagram to show a cave, arch and sea stack.



Explain what will happen to the arch in the future.

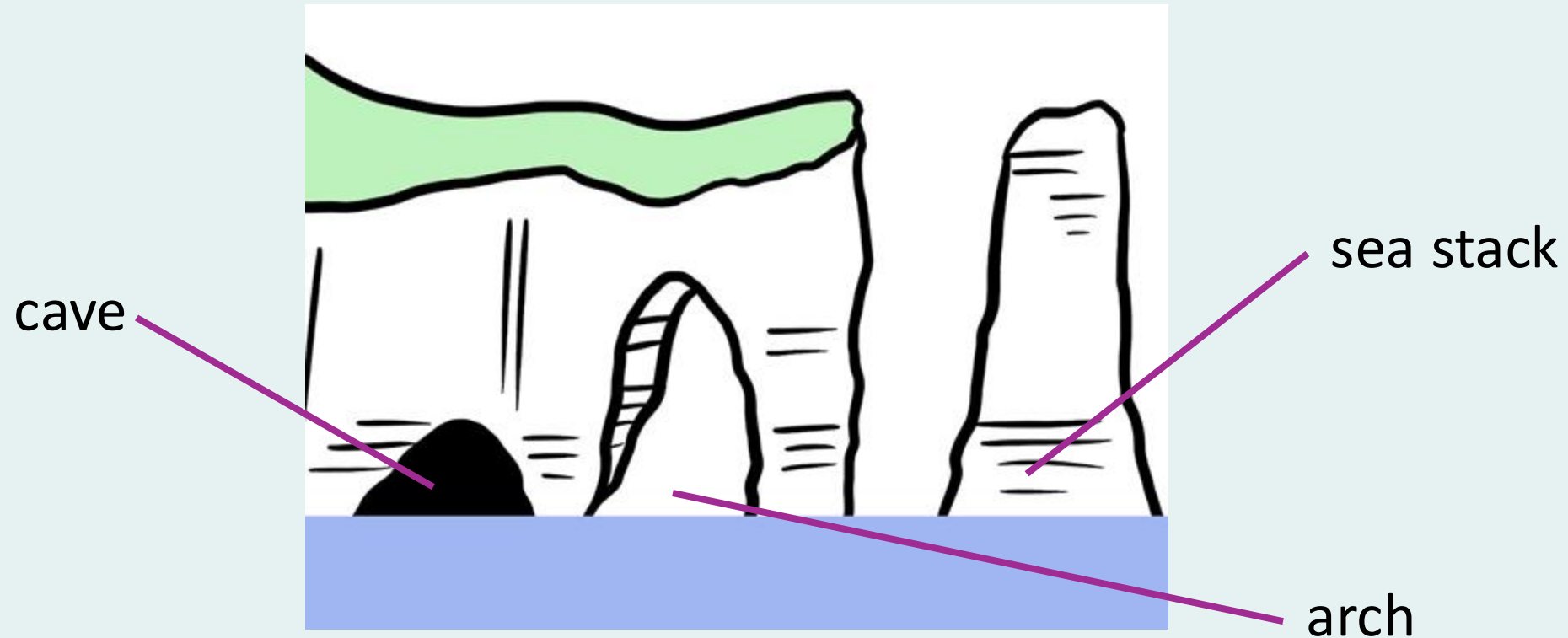
Task

B

What coastal features are created by erosion?



Feedback



In the future the arch will continue to be **eroded** by the **waves** hitting the rock and will eventually collapse so that there will be another sea stack.

Geology affects the how quickly a coastline will **erode**.



Harder rocks, like granite,
erode slowly.



Softer rocks, like boulder clay,
erode quickly.

True or false?

Harder rocks **erode** more quickly than softer rocks.

True

False ✓

Justify your answer

a Harder rocks are easier for **waves** to break apart.

b Softer rocks are easier for **waves** to break apart. ✓



Which of these parts of the coastline is made of hard rock?



Looking at maps and identifying headlands and bays shows which parts of the coastline are made of hard rock and which parts are made of soft rock.



hard rock sticks out into the sea creating a headland

soft rock creates a bay

hard rock

soft rock

Flamborough Head on the North Yorkshire coast is a good example of a headland. It is made of chalk, which is harder than the boulder clay rock to the north and south.



soft rock

Flamborough Head made of hard rock

soft rock

At Flamborough Head there are a range of coastal features created by **erosion**.



sea stack



arch

How does geology affect erosion?



Check

Which map shows a coastline with both hard and soft rock?



a



b



c



Create an information leaflet about the coastal **erosion** taking place at Flamborough Head.

The rock at Flamborough Head is _____. This means that ...

Erosion happens along the coastline because ...

The coastline has a range of features including ...

The sea stack was formed when ...

Draw a labelled diagram of an arch

Words to include: arch, hard, wind, **waves**, headland, collapsed

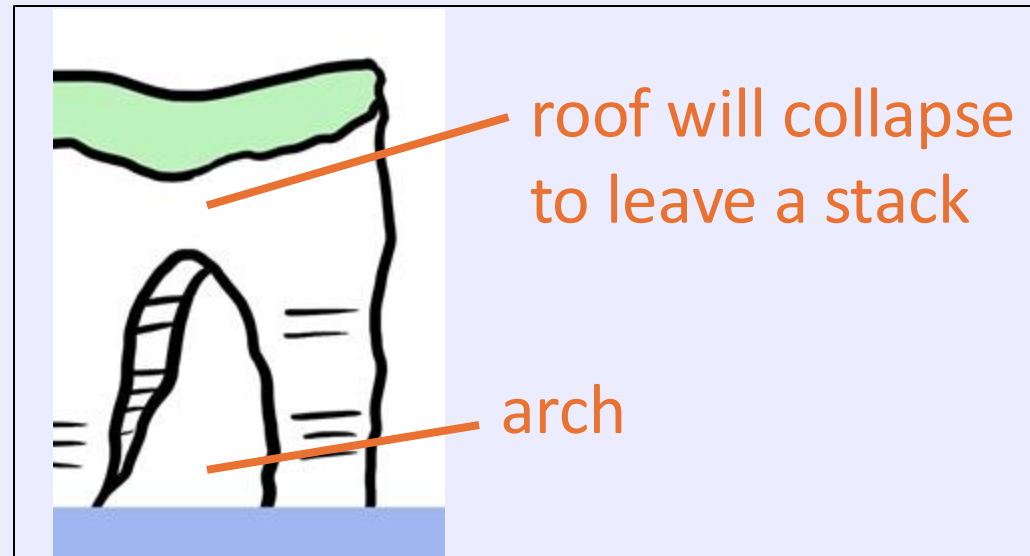
Your answer may have included the following:

The rock at Flamborough Head is **hard** which means **that it forms a headland and sticks out into the sea.**

Erosion happens along the coastline because **waves**, that are created by the **wind, crash into the cliffs.**

The coastline has a range of features including **an arch and a stack.**

The sea stack was formed when **an arch collapsed.**



- **Waves** are created by the wind.
- The size of **waves** depends upon the strength of the wind and the length of time the wind has been blowing.
- **Waves** cause coastal **erosion** and can create features like arches, caves and sea stacks.
- Areas of hard rock will create a headland, which sticks out into the sea.
- Maps can be used to identify headlands and bays formed by different **geology**: hard and soft rock.

Thursday 25th June

KQ: How does coastal erosion affect people's lives?

Exit Quiz

1 _____ the movements of energy across water. Tick 1 correct answer

- Waves are
- Erosion is
- Geology is

2 _____ is the process of Earth's surface, e.g. rock or soil, being worn away and transported from its original site. Tick 1 correct answer

- Erosion
- Transportation
- Deposition

3 Waves are formed by _____ Tick 1 correct answer

- the gravitational pull of the moon
- the movement of boats
- the wind blowing over the surface of the sea

4 The size of the wave depends upon: Tick 3 correct answers

- the strength of the wind
- the distance from the equator
- the length of time the wind has been blowing
- the depth of the water

5 Which two of these factors create large waves? Tick 2 correct answers

- the strength of the wind
- the temperature of the wind
- the spin of Earth
- the length of time the wind has been blowing

6 Erosion by waves can create features such as _____ along a coastline. Tick 1 correct answer

- caves and arches
- caves and beaches
- beaches and arches

Thursday 25th June

RSE – What is sexual intercourse?

- **By the end of this lesson, you will:**
- Be able to **explain** how consent relates to relationships & sex
- **Know** the law about sex
- **Understand** what actually happens during heterosexual sex
- **Know** how to stay safe
- **Key vocabulary:**
- Sexual intercourse, consent, contraception, heterosexual, penis, erection, vagina






Thursday 25th June

RSE – What is sexual intercourse?

Today you will be learning about sexual intercourse, or sex, and some of the issues surrounding it.

Write down what you think sex is and we will put the paper in the worry box anonymously.

What is sex?



Consent

According to the Collins dictionary, consent is:

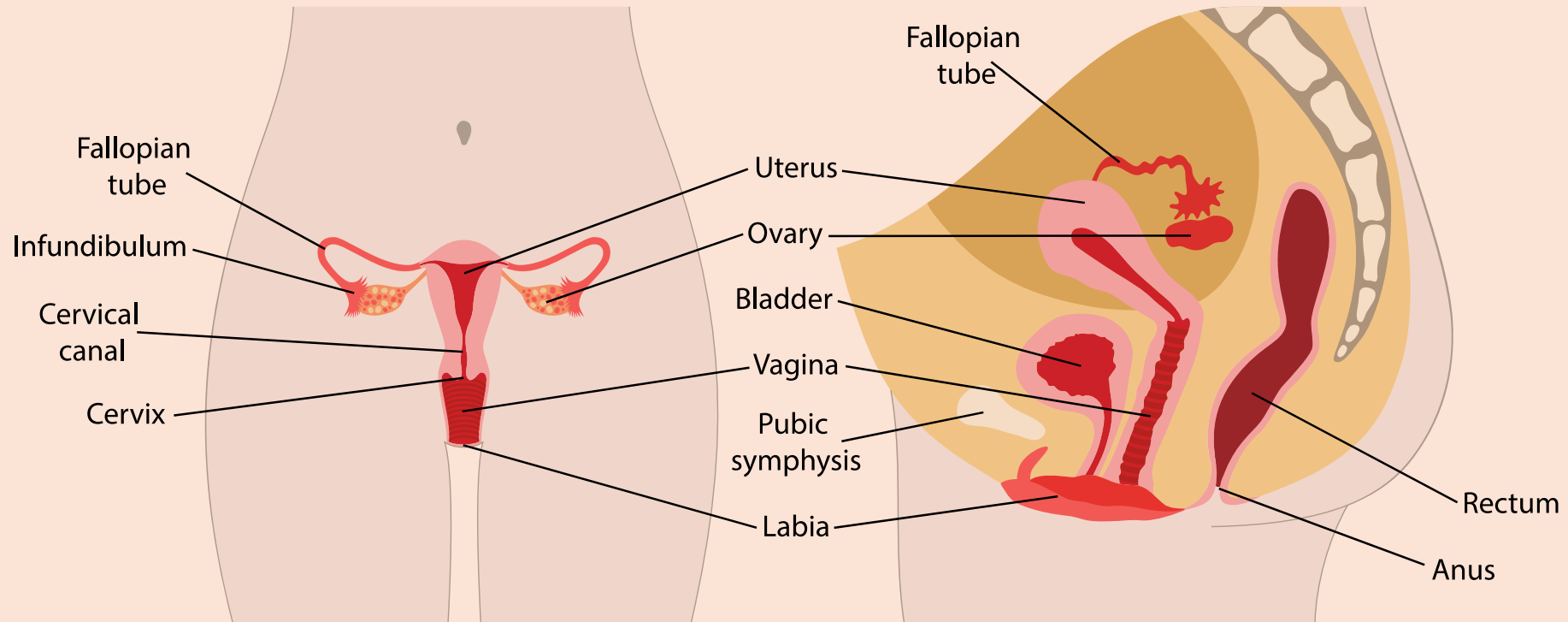
[noun] If you give your **consent to** something, you give someone permission to do it.

[verb] If you **consent to** something, you agree to do it or to allow it to be done.

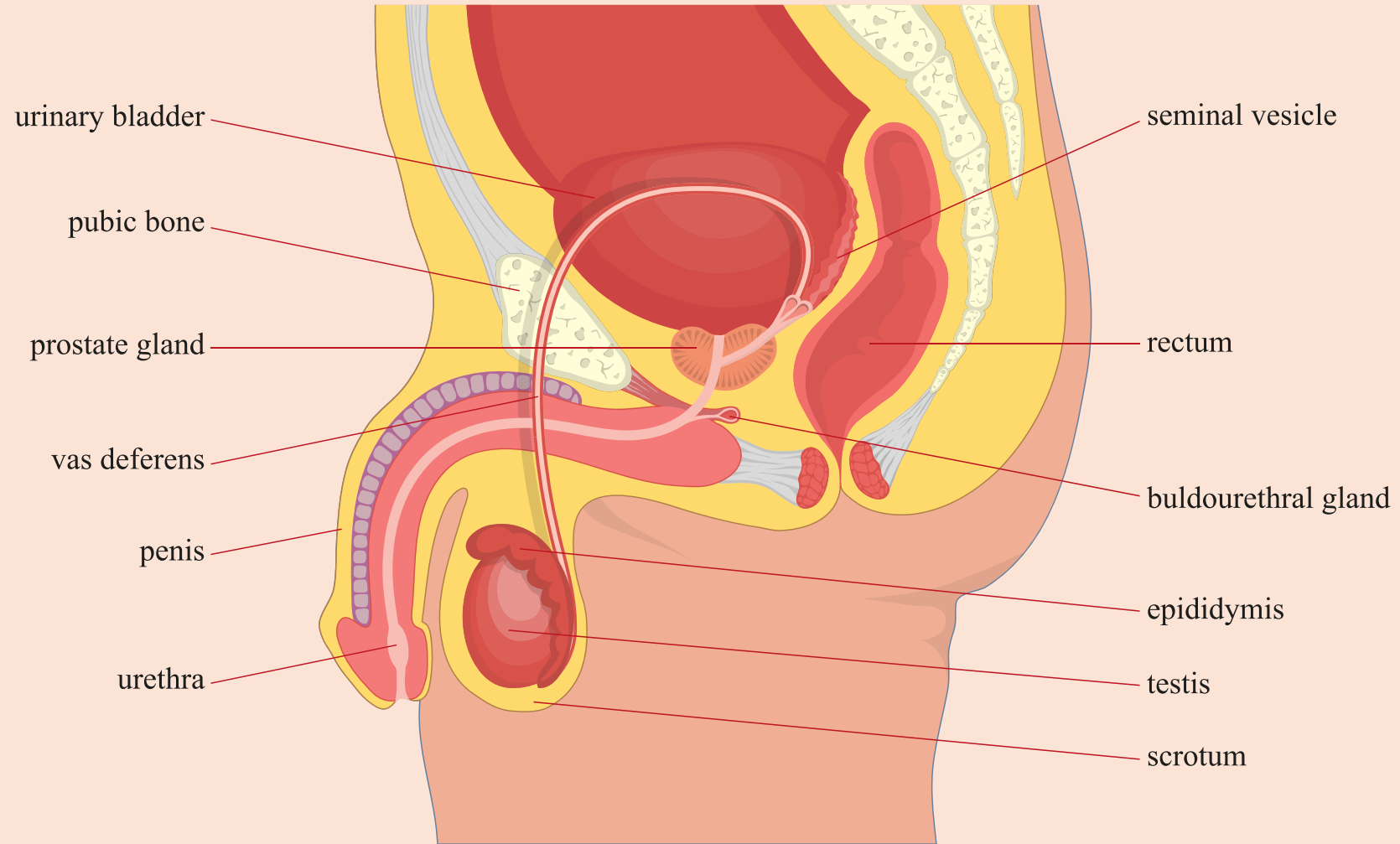
How do you think this relates to relationships or sexual intercourse?



Female reproductive anatomy

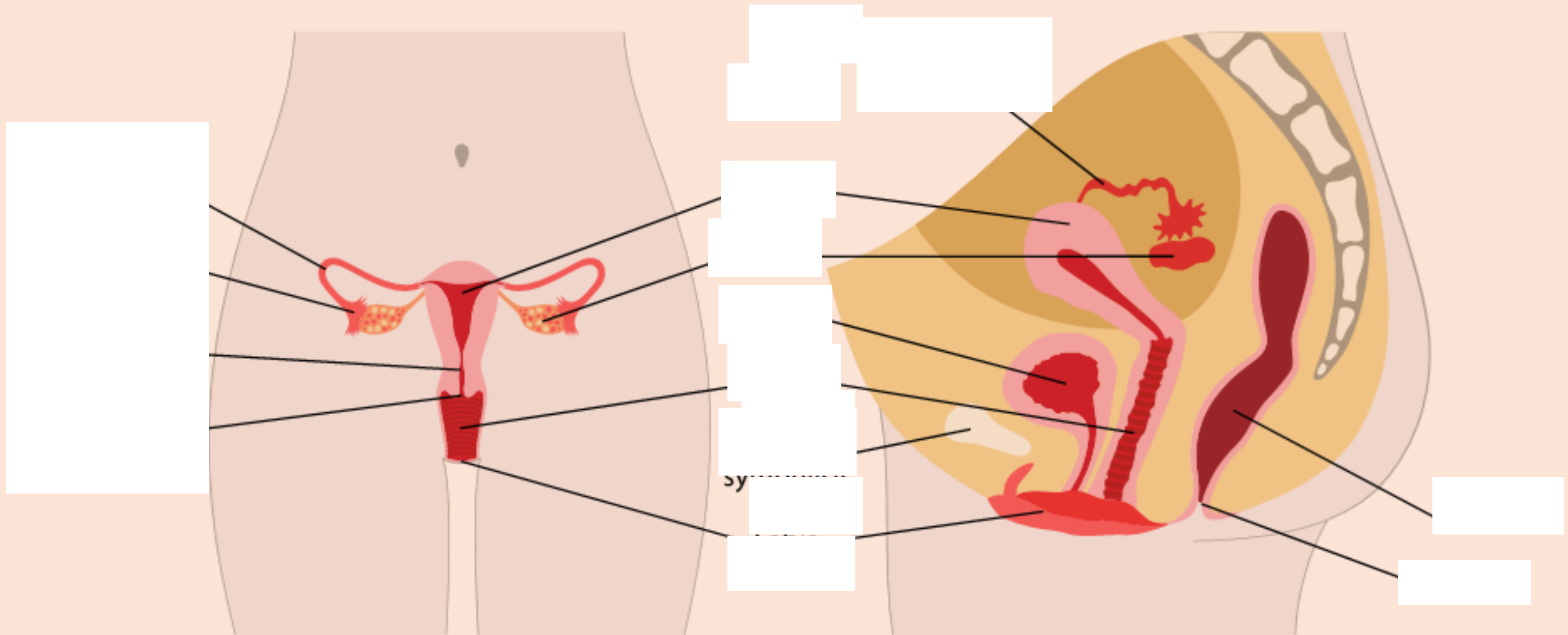


Male reproductive anatomy



Thursday 19th June

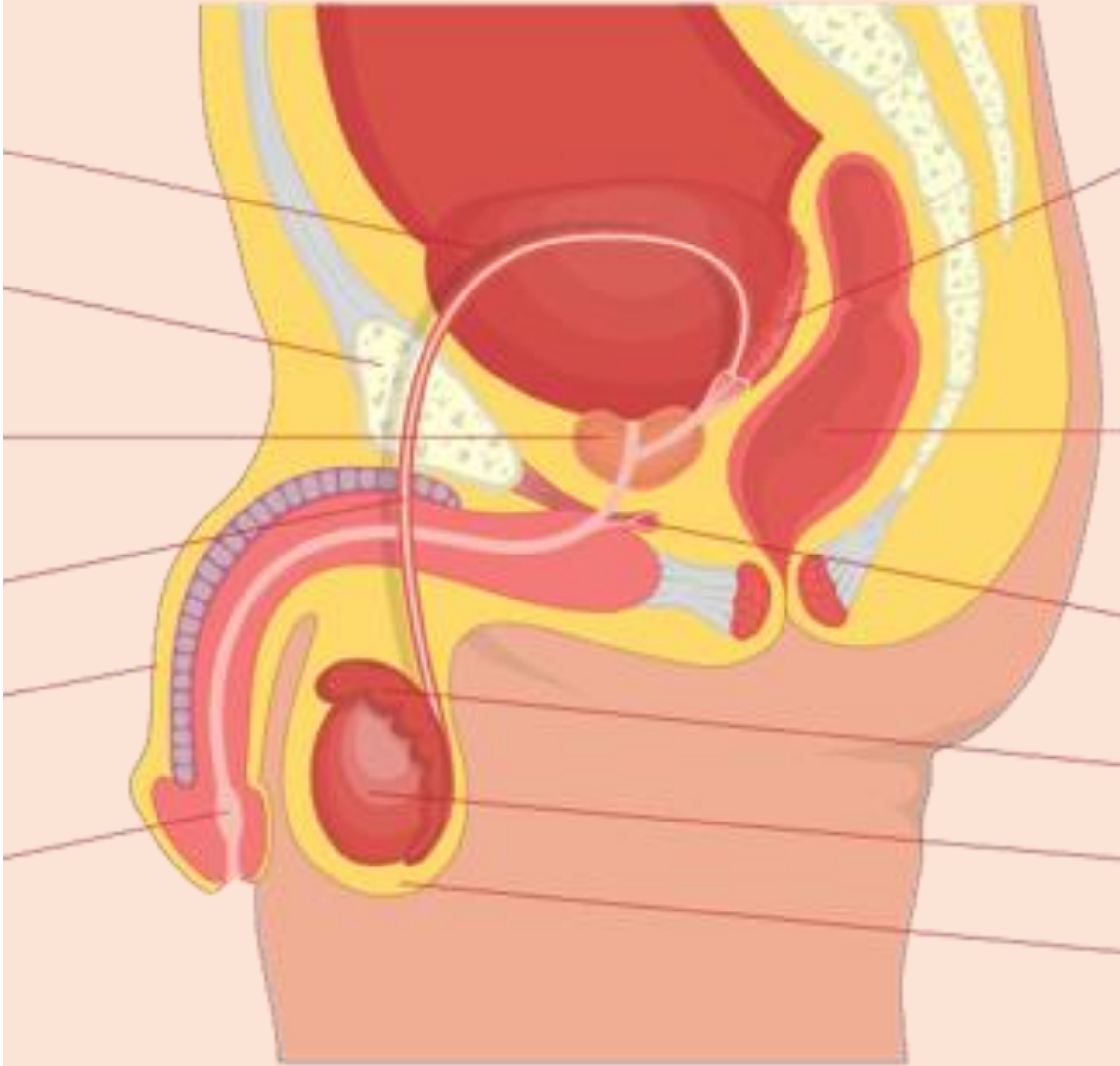
RSE – What is sexual intercourse?



Thursday 19th June

RSE – What is sexual intercourse?

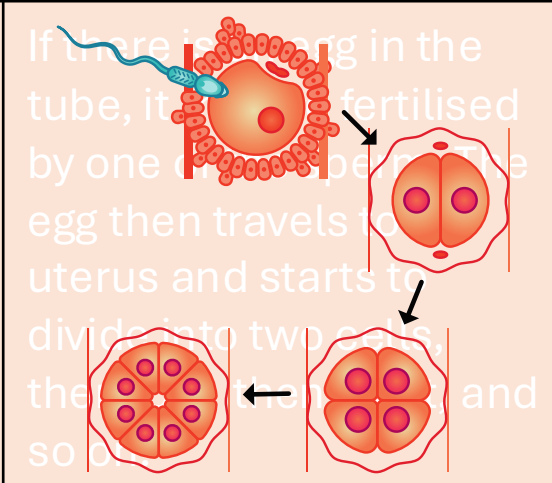
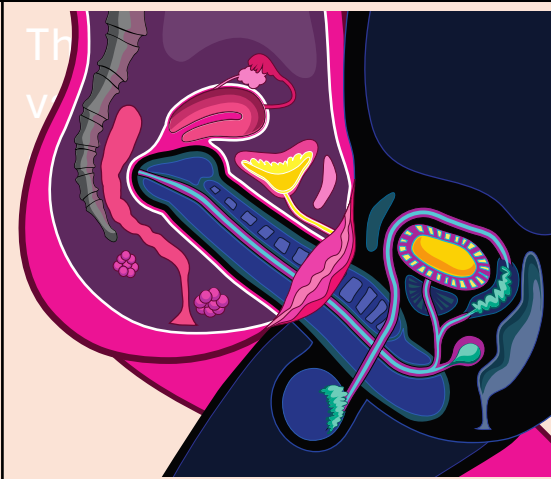
Before we move on, can you recall the correct names for the body parts?



What actually happens

<p>When people make love, they kiss and touch each other in a way that they both enjoy. Often, this means that they agree to have sex because they feel so comfortable together.</p>	<p>The man's penis becomes hard and erect and the woman's vagina produces moisture, which makes it easier for the penis to enter the vagina.</p>	<p>The penis enters the vagina. This is called sexual intercourse. It should feel good.</p>
<p>After a while, the man ejaculates his semen into the woman's vagina. The semen is a liquid full of sperm. The sperm swim up through the woman's uterus and into the fallopian tubes.</p>	<p>If there is an egg in the tube, it may be fertilised by one of the sperm. The egg then travels to the uterus and starts to divide into two cells, then four, then eight, and so on.</p>	<p>The cells attach themselves to the wall of the uterus. There, they grow and gradually develop into a baby. This usually takes nine months, when the baby is ready to be born.</p>

What actually happens



A...
e...
i...
t...
c...
s...
v...
to...
the fallopian tubes.

If there is a sperm in the tube, it is fertilised by one of them. The egg then travels to the uterus and starts to divide into two cells, then four, and so on.

The cells then divide themselves and they grow and develop into a baby. This usually takes about nine months, and the baby is ready to be born.

Seeking support

If you have questions or concerns about today's lesson, you can always speak to:

- Your parent or carer
- Your tutor
- Your Head of Year
- A member of the school safeguarding team



YOUNGMiNDS



NSPCC



allsorts youth project



childline

ONLINE, ON THE PHONE, ANYTIME
[childline.org.uk](https://www.childline.org.uk) | 0800 1111

Thursday 25th June

RSE – What happens during pregnancy?



By the end of this lesson, you will:

- **Understand** how a baby is conceived.
- **Know** the different stages of pregnancy and how a baby is born.
- Be **aware** of other ways that someone can have a baby.

Key vocabulary:

pregnancy, foetus, umbilical cord, embryo, fertilisation, conception, egg, sperm, birth, caesarean section, IVF, surrogacy, adoption, labour

How long does it take for a baby to be ready to be born?



From conception to baby

Conception is the moment when the sperm and the egg meet and fertilisation takes place.

Pregnancy begins once the fertilised egg, which is called an embryo, implants itself in the uterus.

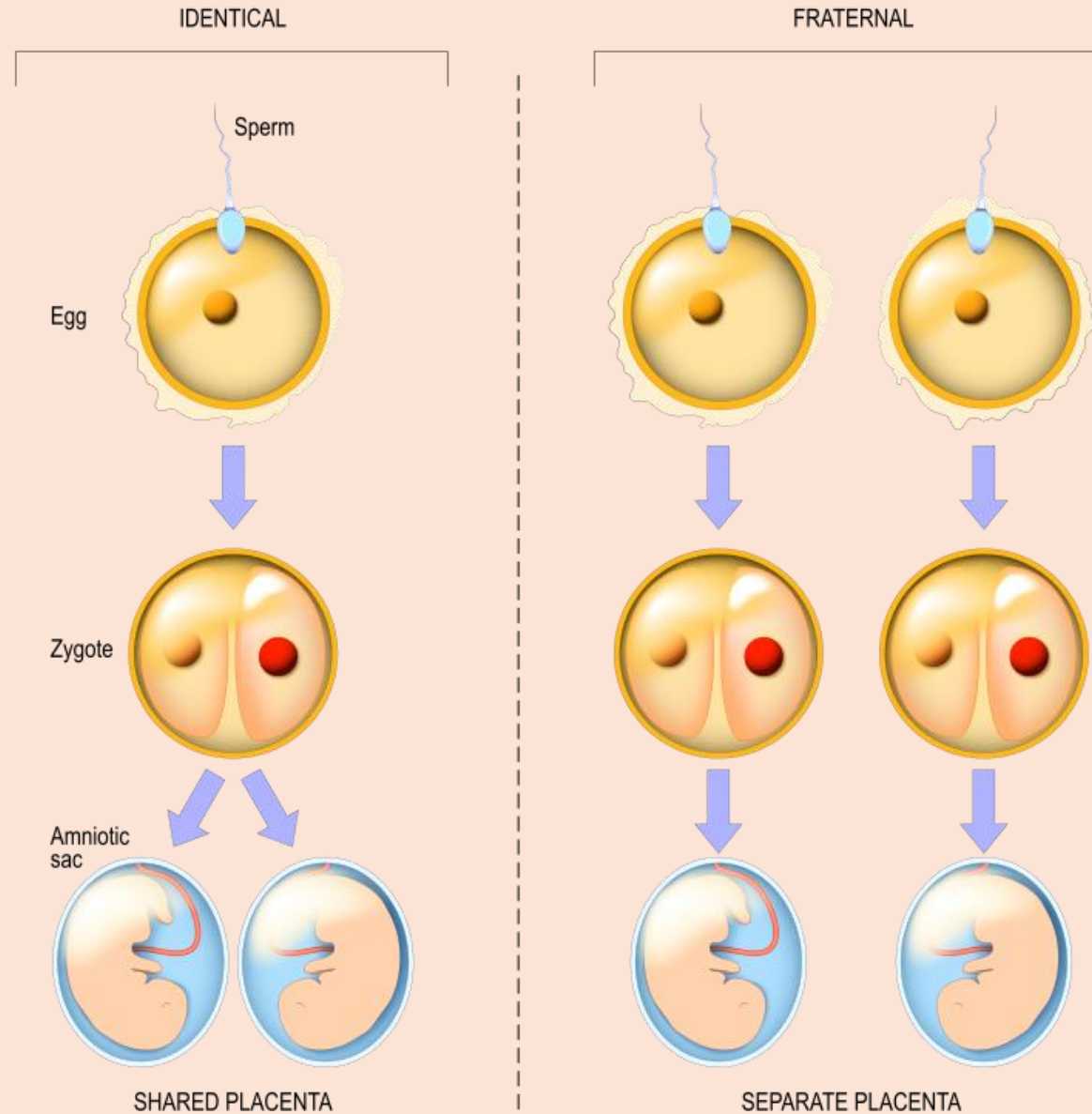
[BBC Two - Science Clips, Life Cycles, Human reproduction](#)



Your task:

Watch the clip and make notes about conception and fertilisation.

How are twins conceived?



Stages of pregnancy

EMBRYO DEVELOPMENT

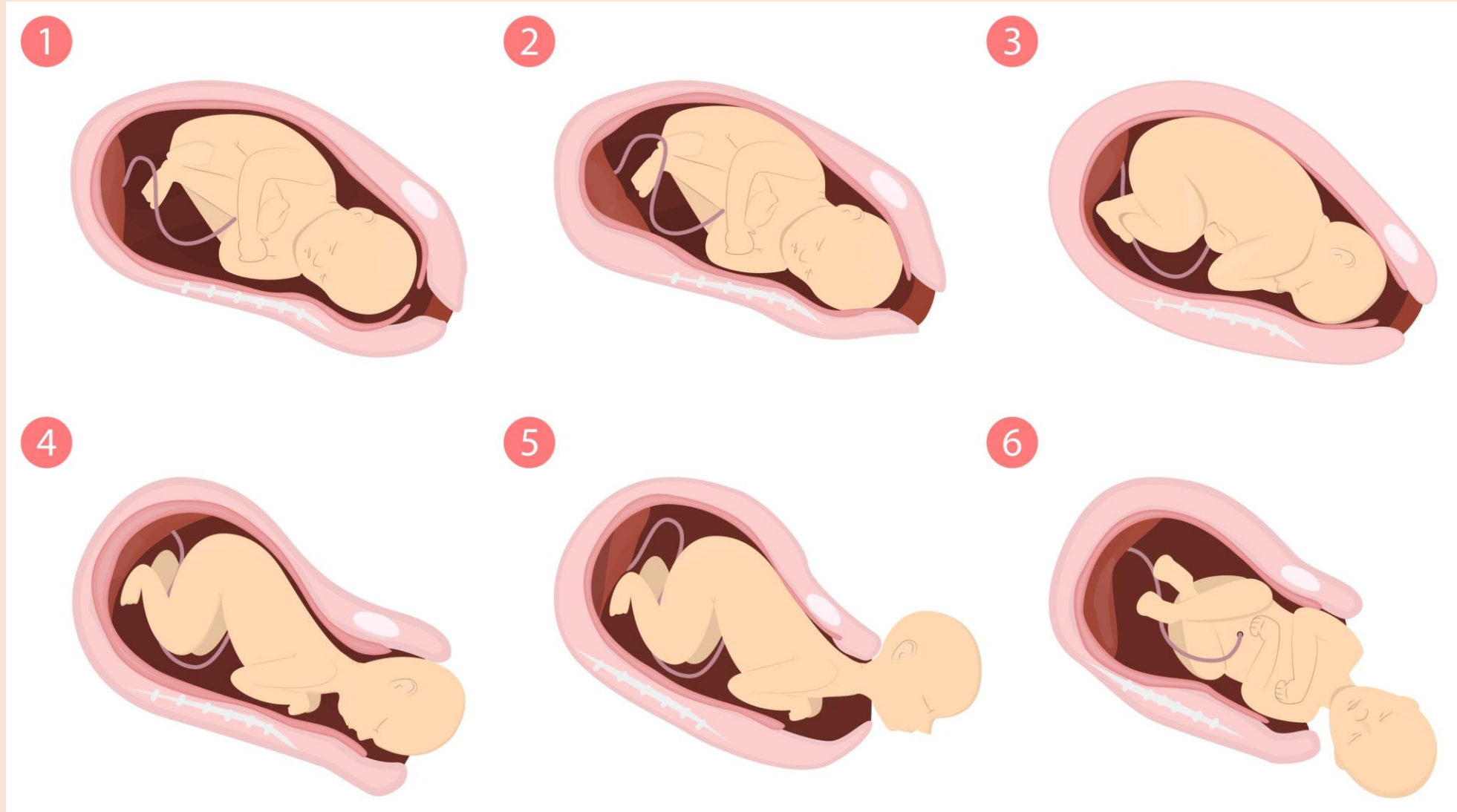


1 TRIMESTER

2 TRIMESTER

3 TRIMESTER

Birth



What are the other ways that someone can have a baby?



Sometimes people are unable, or do not want, to have a baby through sexual intercourse. There are many reasons for this.

There are a number of other ways to have a baby. These include:

- Adoption
- IVF
- Surrogacy



Quiz

1. You cannot get pregnant if you are under 18.
2. A woman can get pregnant before her first period.
3. Twins are formed when you have sexual intercourse twice.
4. A couple cannot have a baby without having sexual intercourse.
5. A woman has to go to a doctor to find out if she is pregnant.
6. The sperm fertilises the egg in the woman's uterus.
7. All babies are born after 40 weeks of pregnancy.
8. The placenta supplies the baby with the nutrients and oxygen it needs to grow and develop.
9. Ovulation is when the sperm and the egg meet.
10. All babies are born by being pushed out of the vagina.