

Monday 9th February

Morning Challenge

Identify the correct spelling.

deciet

deceit

receipt

reciept

glacier

glaceir

recieve

receive

percieve

perceive

socety

society

09.02.26

TBAT: use long division with remainders as fractions.

3 in 3

[Daily 10 - Mental Maths Challenge - Topmarks](#)

1. _____ = 375×46

2. $28 + 3 \times 9 =$

3. Identify all prime numbers between 10 – 20.

Challenge - Erin says, “A triangle has 2 obtuse angles and 1 acute angle.”

Is she correct? Yes or No?

Explain how you know.

09.02.26

TBAT: use long division with remainders as fractions.

Recap division with remainders as fractions -

$$118 \div 9 =$$

$$98 \div 5 =$$

$$67 \div 2 =$$

09.02.26

TBAT: use long division with remainders as fractions.

Haggis has a bag of 500 biscuits. He eats 12 biscuits a day.
How many days will the biscuits last for?



09.02.26

TBAT: use long division with remainders as fractions.

Sam completes a long division and writes:

$$5,400 \div 35 = 153 \text{ r } 45 \qquad 5,400 \div 35 = 153 \frac{45}{35}$$

Sam is incorrect. Explain why.

Challenge - If the answer to a division problem is $22 \frac{1}{4}$, what could the question be?

09.02.26

TBAT: use long division with remainders as fractions.

1) Andeep and Sam have solved some equations. Re-write their answers so that the **remainders** are expressed as **fractions**.

a) $412 \div 32 = 12 \text{ r}28$ b) $709 \div 18 = 39 \text{ r}7$ c) $498 \div 15 = 33 \text{ r}3$

Challenge - If the answer to a division problem is $5 \frac{1}{2}$, how many questions can you think of?

1. $450 \div 16 =$
2. $3433 \div 13 =$
3. $2034 \div 14 =$
4. 3,840 apples are put into bags. Each bag contains 28 apples. How many bags are used?
5. 4,900 pears are put into bags. Each bag contains 32 pears. How many bags are used?
6. Cooper the dog has a bag of 800 biscuits. He eats 14 biscuits a day. How many days do the biscuits last?

Challenge -

1) Look at these division calculations and decide if the statements are true or false. Explain your reasoning.

$$495 \div 15 =$$

$$367 \div 15 =$$

$$855 \div 15 =$$

$$954 \div 15 =$$

- a) Only two of these calculations will leave a remainder because the other two questions have dividends which are multiples of 15.
- b) One of these calculations has a remainder which is odd.
- c) Two of these calculations can also be divided by 45 without leaving a remainder.

Mastery Challenge -

2) Two children have been asked to solve $2422 \div 14$.

Jia



I don't think that there will be a remainder because 2422 will be a multiple of 14 as it is divisible by 2 and 7.

I think that this will leave a remainder because 2422 is not a multiple of 4 or a multiple of 10.

Bartek



Who is correct? Prove it.

Mastery with Greater Depth -

1) Investigate which numbers could match each statement. Find all possible answers.

Amrit



This 3-digit number is less than 300. If I divide it by 15, my remainder is 3.

This number is between 200 and 300. If I divide it by 19, the remainder is 2.

Elias



Abi



I have a 3-digit even number that is less than 350. When I divide it by 32, the remainder is 4.

Challenge -

- 1) Look at these division calculations and decide if the statements are true or false. Explain your reasoning.

$$495 \div 15 =$$

$$367 \div 15 =$$

$$855 \div 15 =$$

$$954 \div 15 =$$

- a) Only two of these calculations will leave a remainder because the other two questions have dividends which are multiples of 15.
- b) One of these calculations has a remainder which is odd.
- c) Two of these calculations can also be divided by 45 without leaving a remainder.

Mastery Challenge -

- 2) Two children have been asked to solve $2422 \div 14$.

Jia



I don't think that there will be a remainder because 2422 will be a multiple of 14 as it is divisible by 2 and 7.

I think that this will leave a remainder because 2422 is not a multiple of 4 or a multiple of 10.

Bartek



Who is correct? Prove it.

Mastery with Greater Depth -

- 1) Investigate which numbers could match each statement. Find all possible answers.

Amrit



This 3-digit number is less than 300. If I divide it by 15, my remainder is 3.

This number is between 200 and 300. If I divide it by 19, the remainder is 2.

Elias



Abi



I have a 3-digit even number that is less than 350. When I divide it by 32, the remainder is 4.

Monday 9th February

TBAT: spell words from word families based on common words.

commit

committee

transmit

submit

commitment

A series of five sets of handwriting practice lines, each corresponding to one of the words listed on the left. Each set consists of four horizontal lines: a top red line, two middle blue lines, and a bottom red line. The middle blue lines are connected by a dotted line, forming a guide for letter height and placement. The lines are blank, intended for the student to write the words and practice their spelling.

Challenge – Write a sentence including a spelling in the past progressive tense.

Monday 9th February

TBAT: develop retrieval, inference and interpretation skills using a classic poem.

3 in 3

Jamal checked his watch again, then quickened his pace. His train was due in four minutes and he reckoned he was about four minutes' walk to the station. Anyway, these days they were always late – that's what his dad kept saying when he was grumbling about his day. Still, he absolutely had to catch this one, otherwise he would be in big trouble. Bee-baaarb! The unmistakable sound of the train's horn made him jump. It was early! He broke into a run, but almost immediately heard a slap on the pavement behind him. His wallet! No money – just his ticket. But if he stopped, he'd surely miss the train.

- 1. According to the text, how long would it take him to walk to the station?**
- 2. What does the writer mean by '*Bee-baaarb*'?**
- 3. What did the writer say would happen if Jamal stopped to pick up his wallet?**

Monday 9th February

TBAT: develop retrieval, inference and interpretation skills using a classic poem.

Words we will find in the text:

1. **Dumb** - Silent; making no sound.
2. **Roundelay** - A short, simple song that is repeated.
3. **Belfry** - The tower of a church where the bells are kept.
4. **Rarely** (in older poetic use) - Very nicely; beautifully; excellently.
(This is different from the modern meaning "not often")
5. **Wit** - A person's senses or powers of thinking.
6. **Thatch** - A roof made of straw or reeds, common in older country houses.



Monday 9th February

TBAT: develop retrieval, inference and interpretation skills using a classic poem.

Partner discussion -

What kind of place do you
imagine from these lines?

Why?

The Owl

When cats run home and light is come,
And dew is cold upon the ground,
And the far-off stream is dumb,
And the whirring sail goes round,
And the whirring sail goes round;
Alone and warming his five wits,
The white owl in the belfry sits.

When merry milkmaids click the latch,
And rarely smells the new-mown hay,
And the cockerel hath sung beneath the thatch
Twice or thrice his roundelay,
Twice or thrice his roundelay;
Alone and warming his five wits,
The white owl in the belfry sits.

Monday 9th February

TBAT: develop retrieval, inference and interpretation skills using a classic poem.

In pairs, read the poem again
and annotate for:

- unfamiliar words
- mood clues
- repeated lines
- natural imagery

Think carefully about setting,
sounds and feelings.

The Owl

When cats run home and light is come,
And dew is cold upon the ground,
And the far-off stream is dumb,
And the whirring sail goes round,
And the whirring sail goes round;
Alone and warming his five wits,
The white owl in the belfry sits.

When merry milkmaids click the latch,
And rarely smells the new-mown hay,
And the cockerel hath sung beneath the thatch
Twice or thrice his roundelay,
Twice or thrice his roundelay;
Alone and warming his five wits,
The white owl in the belfry sits.

Monday 9th February

TBAT: develop retrieval, inference and interpretation skills using a classic poem.

Retrieval

1. Where does the white owl sit in the poem?
2. What time of day is being described when “cats run home and light is come”?

Words in Context

1. What does the poet mean when he says the stream is “dumb”?
2. What is a “roundelay” and who is said to sing it?

Monday 9th February

TBAT: develop retrieval, inference and interpretation skills using a classic poem.

Inference

1. What clues does the poem give that the setting is in the countryside?
2. Why do you think the owl is described as “warming his five wits”? What does this suggest about him?

Author's Intent

1. How does the poet create a calm and peaceful atmosphere? Give two examples from the poem.

Structure

1. Why does each stanza end in the same two lines? How does this affect the rhythm of the poem?

Challenge - Write one thing the poet does to create a calm atmosphere.

Mastery - Opinion / Justification

Do you think the owl’s night-time world feels lonely or comforting? Explain your view with evidence from the text.


Monday 9th February

Safer Internet Day

- Responsible use of technology

Match each description


Activity 1 Draw a line to match the word to its definition.



AI technologies	Thinking about how your decisions might affect you, somebody or something you're taking care of.
usage rules	The general term that refers to any system, tool, model or machine that uses neural networks or machine learning to simulate human intelligence.
responsible	Not thinking about how your decisions might affect you, somebody or something you're taking care of.
respect	A set of rules or steps to follow when using AI technologies.
critical thinking	Showing polite behaviour and caring about how your words and actions affect others.
irresponsible	The process of analysing, evaluating and questioning information to make informed decisions. It enables you to assess whether information is reliable and trustworthy rather than accepting it at face value.

Monday 9th February Safer Internet Day

- Responsible use of technology
- ## Scenario cards




Activity 2 Read the scenarios of people using AI technologies. Use critical thinking and write whether you think each scenario shows **responsible** or **irresponsible** use.

2021 Safer Internet Day 2026 Tuesday 10 February
Coordinated by the UK Safer Internet Centre
saferinternetday.org.uk

<p>A chatbot asks Remi to share his address so it can find the best toy shop near him. He chooses not to share his address and tells a trusted adult what happened.</p> <hr/>	<p>Ayla uses an AI-powered app to help her complete her homework. She copies the answers it has generated and doesn't proofread them or check the accuracy using reliable websites.</p> <hr/>
<p>An AI system suggests a video that includes a link to a different video. Lucy chooses not to click on the link and tells her trusted adult what happened.</p> <hr/>	<p>Yvette's friend takes a photo of their teacher and asks an AI image generator to turn them into a cartoon character.</p> <hr/>
<p>Kai wants to ask a voice assistant to tell a funny story. Before he does, he asks his trusted adult for permission and they recommend a way to ask to ensure the story is age-appropriate.</p> <hr/>	<p>Axton has been sent a link to an AI tool his friend has been using. There is an age restriction to use this tool. Even though he isn't old enough, Axton clicks on the link and downloads the tool.</p> <hr/>

Monday 9th February Safer Internet Day

- Responsible use of technology
- Fill in the blanks



Activity 3 Fill in the missing words using the word bank to discover what using AI technologies responsibly can look like.

Safer Internet Day 2026 | Tuesday 10 February
Coordinated by the UK Safer Internet Centre
saferinternetday.org.uk

When using AI technologies responsibly, it is always important to use _____. This means stopping to _____, evaluate and _____ information to make informed decisions. AI technologies can be helpful tools to find new information. However, we must check and proofread anything generated to make sure it is _____, reliable and fair. We should think carefully about the personal information we share. To keep our information private, we should never share names, _____, pictures that share a location, _____ or our age. Using AI technologies responsibly also involves _____. This means if anything is unkind, offensive or _____, you must always tell a _____.

analyse

critical thinking

trusted adult

addresses


passwords

question

trustworthy

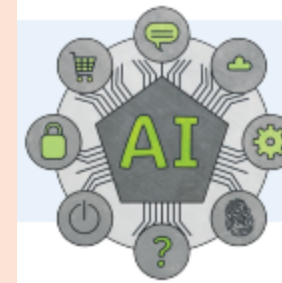
respect

unfair



Monday 9th February Safer Internet Day

- Responsible use of technology
- Create your own rules



Activity 4 Create your own rules or steps that you and others can follow to ensure safe and responsible use of AI technologies.

Safer Internet Day 2026 | Tuesday 10 February
Coordinated by the UK Safer Internet Centre
saferinternetday.org.uk

AI Technologies Usage Rules

When using AI technologies, we must...

■ _____

■ _____

■ _____

■ _____

Monday 9th February

Dance

To choreograph a freeze frame montage in the 1970s style.

Success Criteria

- Freeze frames need to communicate a clear story and theme.