

Wednesday 17th December

Morning Challenge

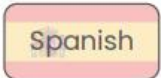
Match the translation to the language.

MERRY CHRISTMAS



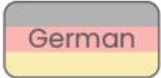
French

Feliz Navidad



Spanish

Joyeux Noël



German

Fröhliche Weihnachten

Circle the odd one out.



Complete the Christmas sentence with words using the suffix '-ful'.

Oh come, all ye _____
_____and triumphant.



Which gifts from 'the 12 days of Christmas' song can you make using the letters below?
You can use the letters more than once.



Find and copy the phrase that means 'feeling happy'.

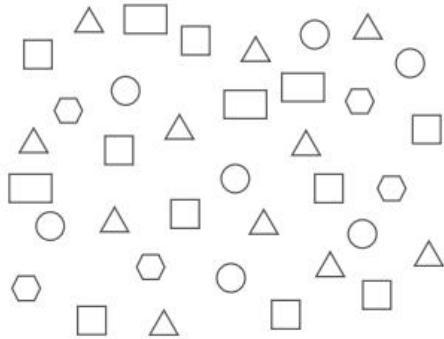
Dashing through the snow
in a one-horse open sleigh,
o'er the fields we go
laughing all the way
(ha ha ha).

Bells on bobtails ring,
making spirits bright,
what fun it is to ride and sing a
sledding song tonight.

Oh, jingle bells, jingle bells,
jingle all the way,
oh what fun it is to ride
in a one horse open sleigh!

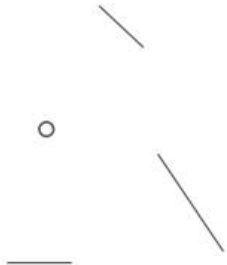


The elves are sorting Christmas cookies according to shape.
Use the pictures to help you complete the tally chart.



shape	tally
square	
circle	
triangle	
hexagon	
rectangle	

Use the doodles to create a Christmas image.



Complete the Christmas cracker!

What is the best
Christmas present in the
world?



Name

Score



EMW Y3 Christmas D4



© Classroom Secrets 2022

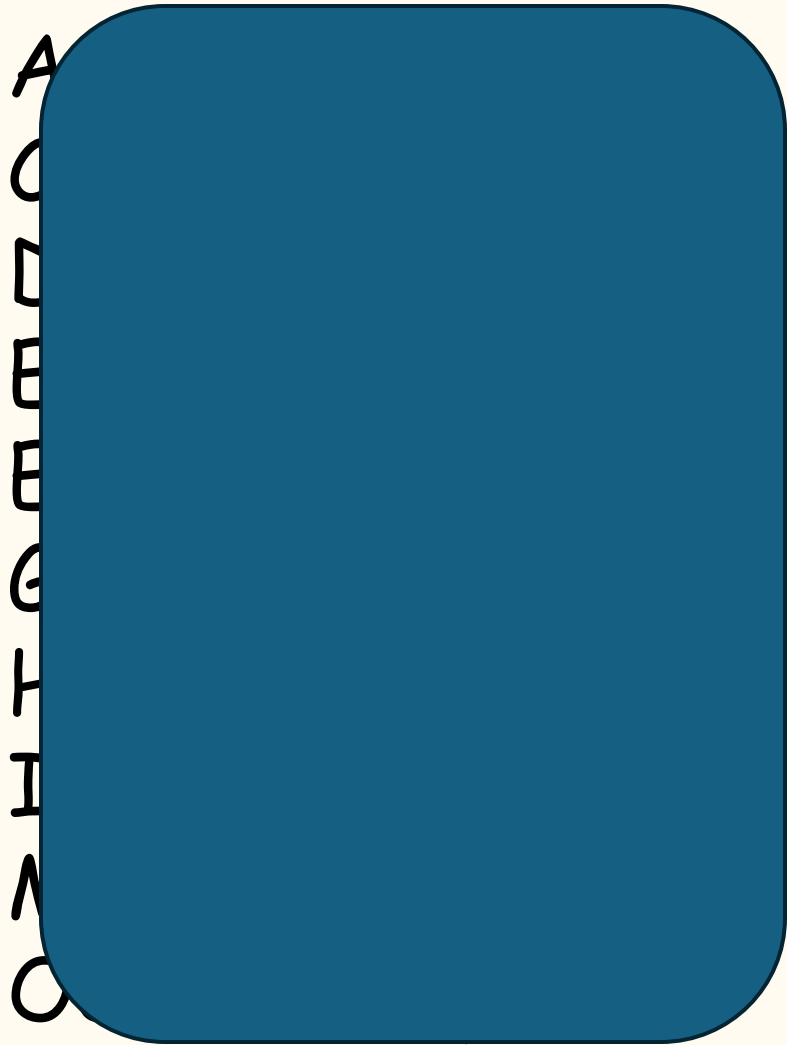
Wednesday 17th December

Hedgehog assembly 9am

Wednesday 17th December

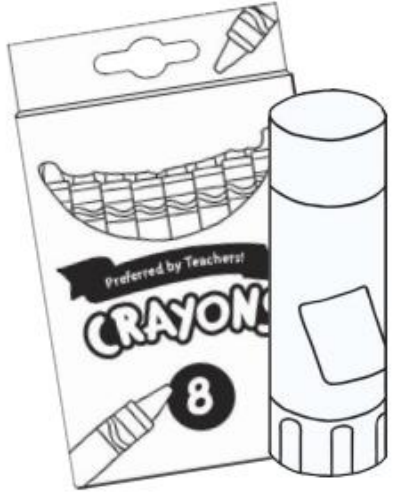
Attendance assembly 10am

Wednesday 17th December



Wednesday 17th December
TBAT: follow instructions.

How to Make a Holly Wreath



Instructions

1. Cut around the wreath shape and ask an adult to help cut the centre piece out.
2. Colour the holly leaves in green.
3. Cut the leaves out carefully.
4. Colour the berries in red.
5. Cut the berries out carefully.
6. Stick the holly leaves in pairs around the edge of your wreath.
7. Add three berries to each pair of leaves.
8. Punch a hole through the top of your wreath carefully.
9. Thread the ribbon through to enable your wreath to hang down.
10. Hang your Christmas wreath on a door or window.

You will need:

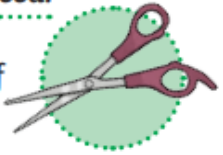
- scissors
- coloured pens – red and green
- ribbon
- templates
- glue stick

Instructions for Christmas Box Baubles

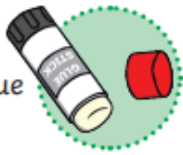
Follow these simple instructions to make your own cube-shaped Christmas box bauble. Why not fill it with Christmas treats or a toy for a friend as a surprise?

You will need:

a pair of scissors



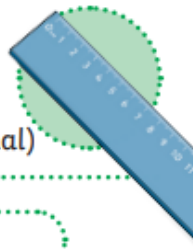
glue



a small toy or treat (optional)



a ruler (optional)



Instructions:

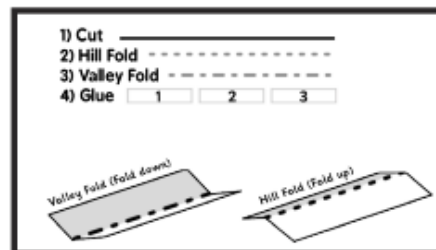
1. First, cut out the template along all the solid black lines. Be sure to cut the line that makes the handle (see picture).
2. Now, fold all of the dotted lines to help you make your cube shape before gluing.



All the dotted lines fold down (a hill fold). The two 'dotted and dashed' lines on the handle fold up (a valley fold).

Use a ruler to help you keep a straight edge.

Follow this diagram:



How to Make the Cubes:

3. Start to glue; join the faces of the cube together by adding glue first to tab 1, followed by tabs 2, 3 and finally 4. Each time you add glue, hold the tab to the face next to it until it has dried.

Top Tip: If you want to hide a small toy or Christmas treat inside the box, drop it in now!

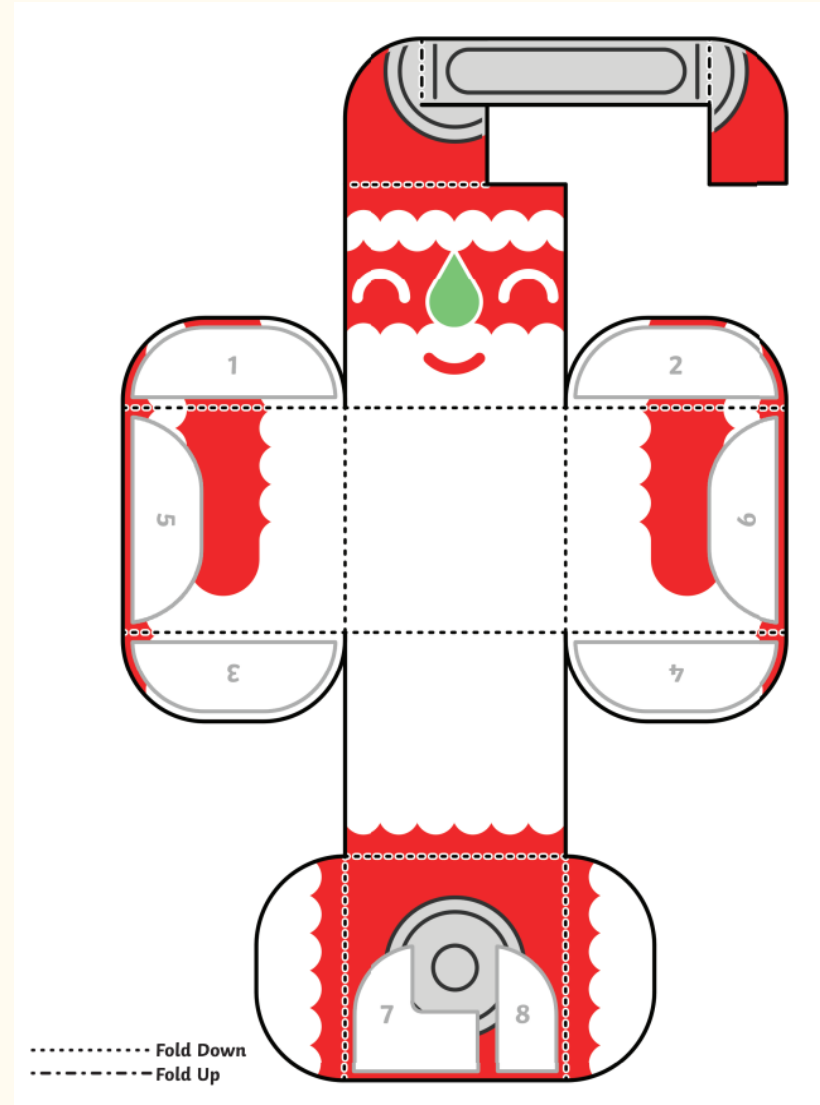
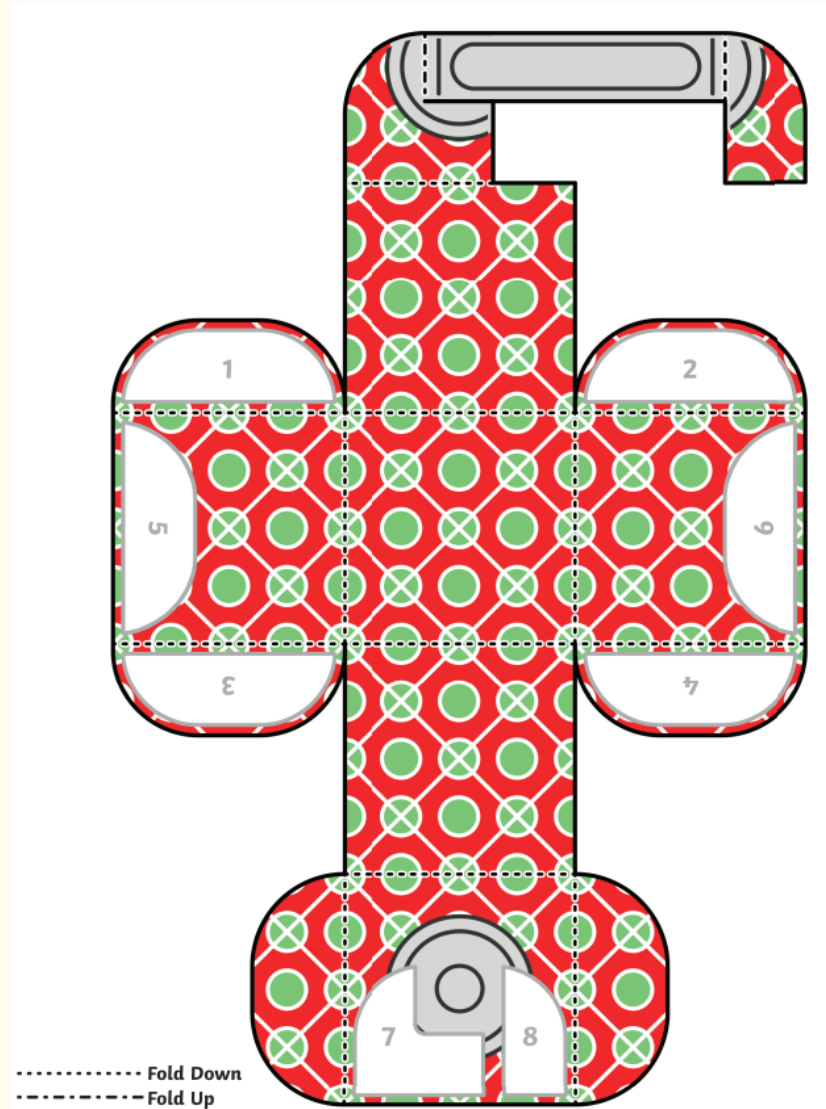
4. Next, fold down the top face of the cube. Making sure the handle is untucked first, add glue to shapes 5 and 6 and attach the two tabs on top.

5. Finally, glue the handle into place; add glue to shape 7 and fold the tab down on top of it.

6. Curve the other side of the handle over, then glue it on top of shape 8 to finish the handle.

You have finished your Christmas box bauble!
Why not make another bauble in a different design?

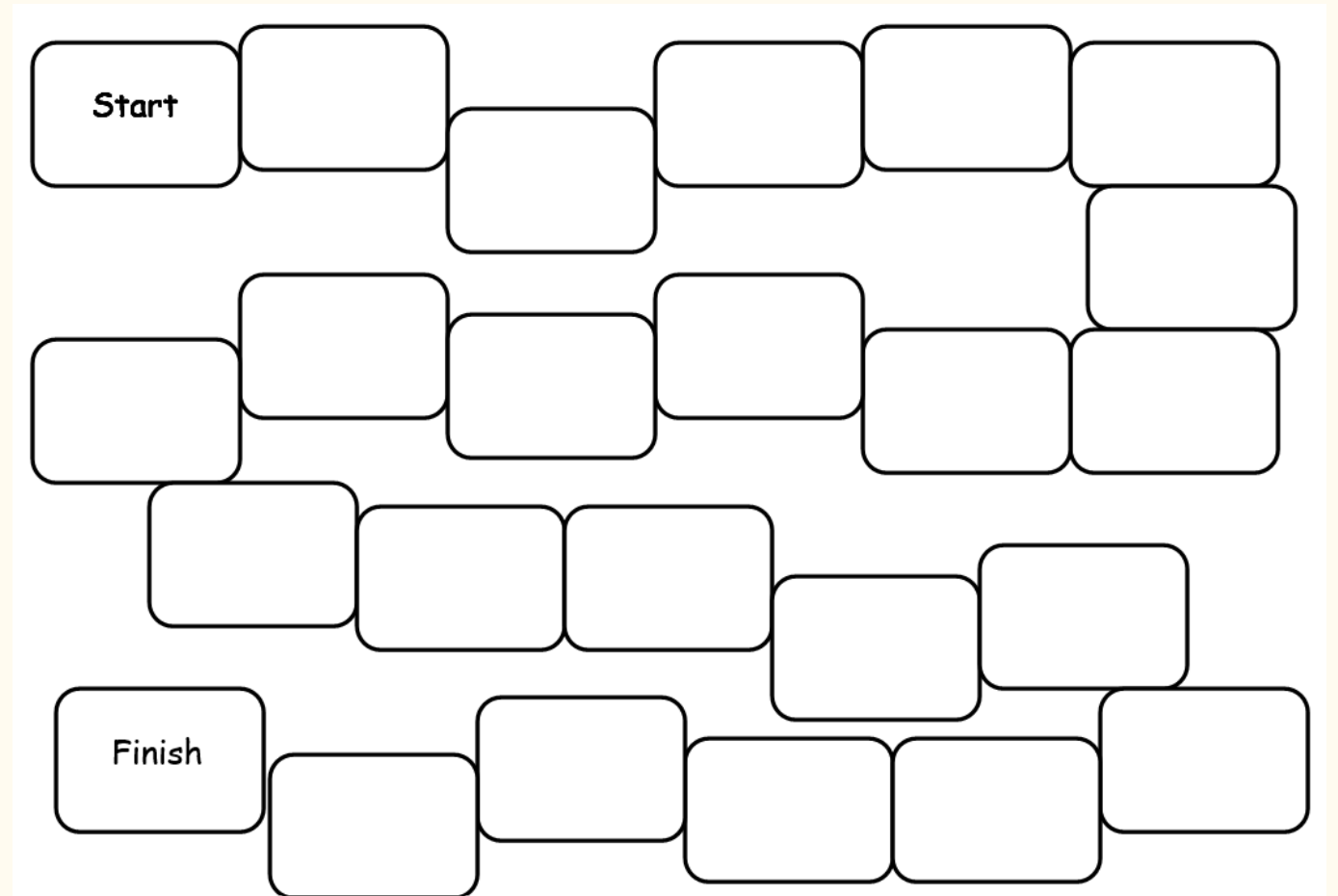
Tuesday 16th December



Christmas board game – Santa's sleigh

You are going to create
your very own
Christmas board game!

'Santa is on his sleigh,
it's Christmas Eve.
Follow the instructions
to help him deliver the
presents.'



Christmas board game - Santa's sleigh

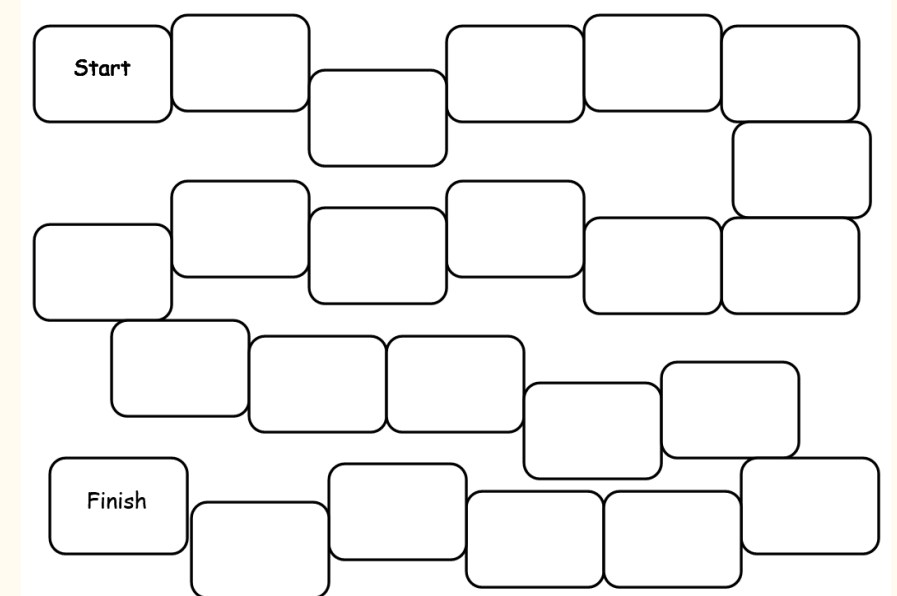
Step 1

Writing in the boxes!

Some of your boxes will have pictures, others will give your players instructions such as:

- **Santa has fallen asleep - miss a go!**
- **The elves are helping you - move forward 2 spaces**
- **You've dropped a present - move back 2 spaces**
- **You're a Christmas star - roll again!**

Once you have written in your instruction boxes, draw Christmas images in the other boxes (or just colour them in!)



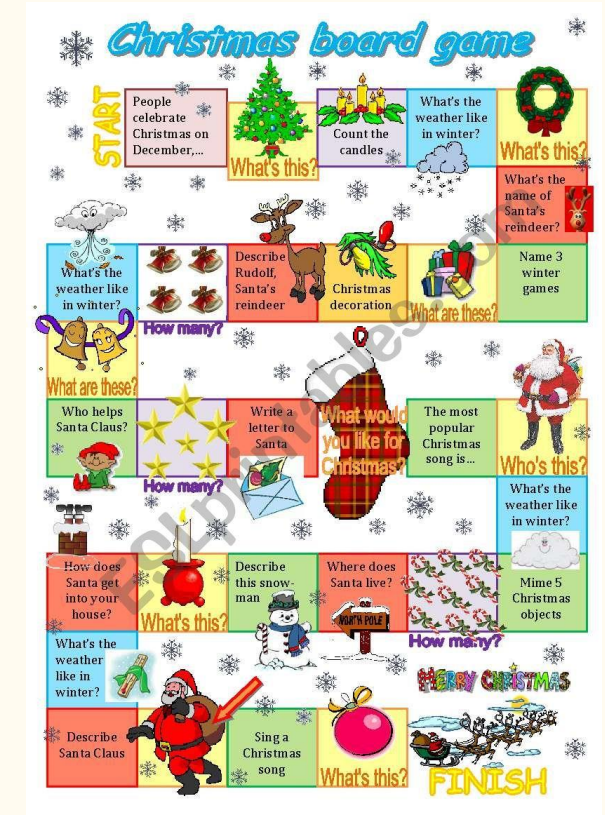
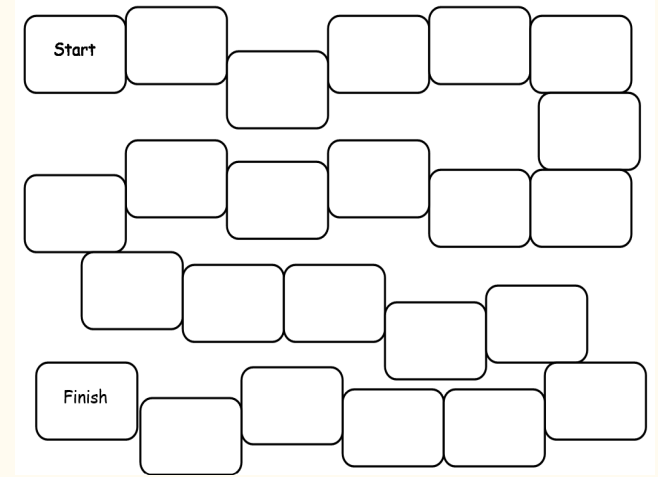
Christmas board game - Santa's sleigh

Step 2

Make sure all your boxes are coloured in.
Then, think about the background of your
board game.

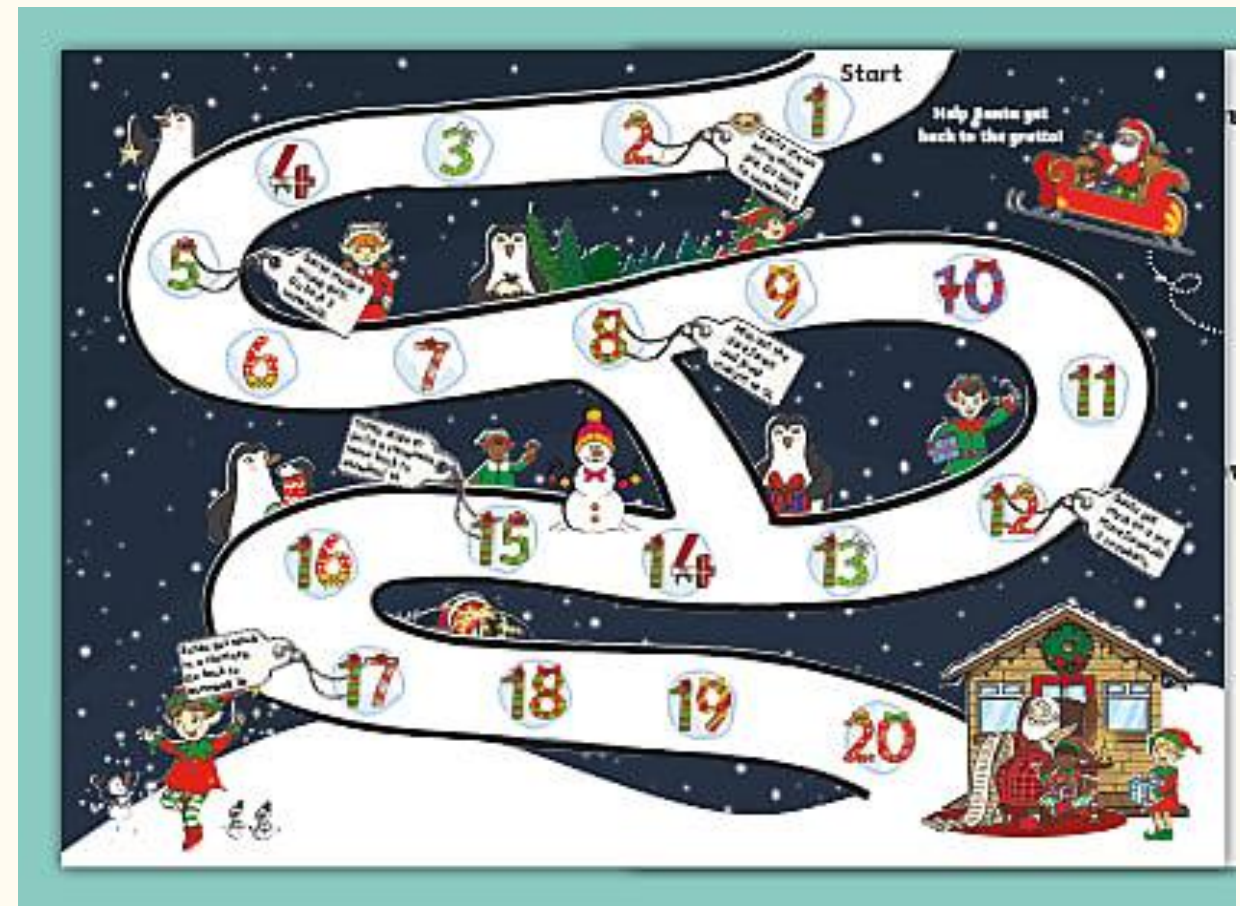
What images could you add? Perhaps
they'll link in with your game instructions.

Look at your images sheet to help you with
ideas.





Christmas board game - Santa's sleigh



Christmas board game - Santa's sleigh

Wednesday 17th December

Make a Christmas hat for Christmas dinner

