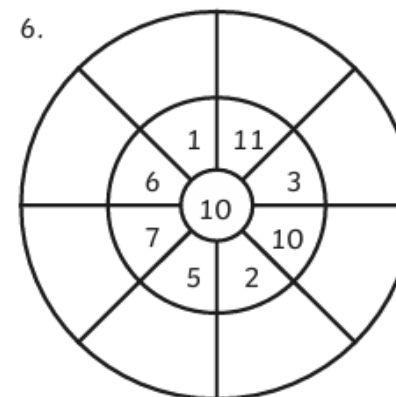
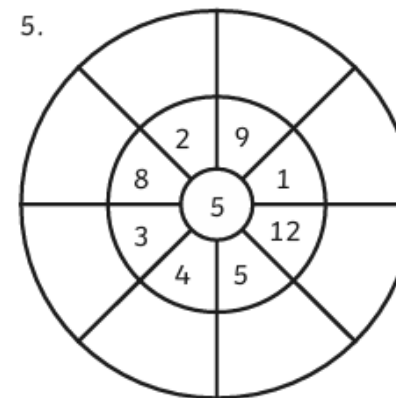
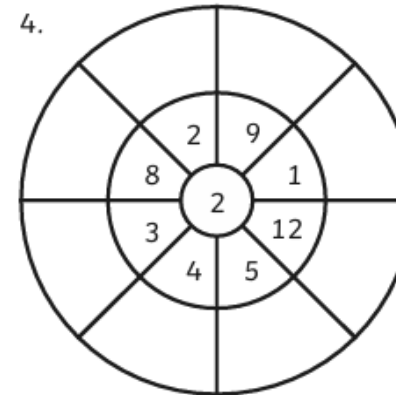
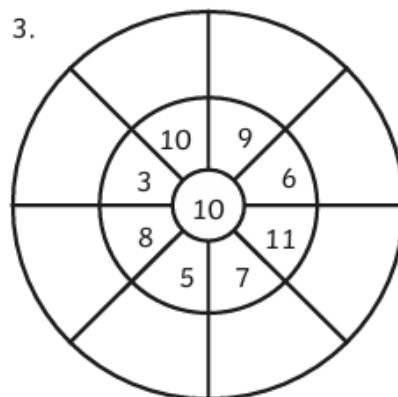
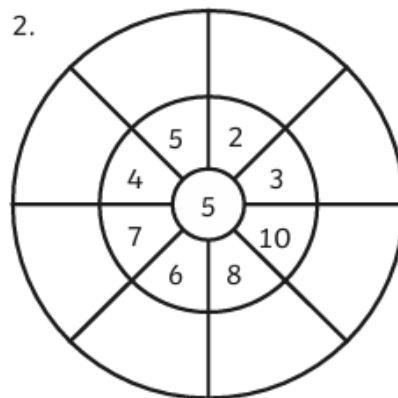
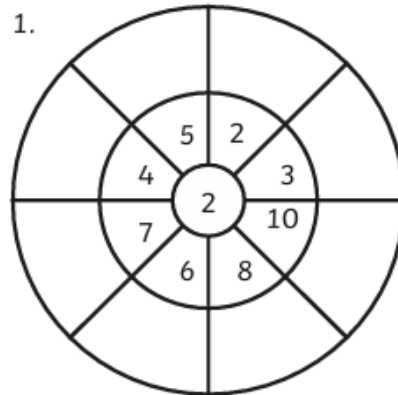


# Monday 8th September

## Morning Challenge



# Monday 8th September

## Times tables practice

1	2	3	4	5	6	7	8	9	10
11	12	13	14	15	16	17	18	19	20
21	22	23	24	25	26	27	28	29	30
31	32	33	34	35	36	37	38	39	40
41	42	43	44	45	46	47	48	49	50
51	52	53	54	55	56	57	58	59	60
61	62	63	64	65	66	67	68	69	70
71	72	73	74	75	76	77	78	79	80
81	82	83	84	85	86	87	88	89	90
91	92	93	94	95	96	97	98	99	100

Let's start by counting in our 2's together.  
2..4..6..8..10..12..14...

Now let's count in our 5's together.  
5..10..15..20..25...

# Monday 8th September

## Times tables practice

1	2	3	4	5	6	7	8	9	10
11	12	13	14	15	16	17	18	19	20
21	22	23	24	25	26	27	28	29	30
31	32	33	34	35	36	37	38	39	40
41	42	43	44	45	46	47	48	49	50
51	52	53	54	55	56	57	58	59	60
61	62	63	64	65	66	67	68	69	70
71	72	73	74	75	76	77	78	79	80
81	82	83	84	85	86	87	88	89	90
91	92	93	94	95	96	97	98	99	100

Stick this sheet in your book and colour the 2 times tables in a coloured pencil. Then the 5 times tables in a different colour.

08.09.25

TBAT: To know multiple of 5s bonds to 100.



In your book write 1 - 10  
ready to answer the daily  
10 questions.

- 1.
- 2.
- 3.
- 4.
- 5.
- 6.
- 7.
- 8.
- 9.
- 10.

08.09.25

TBAT: To know multiple of 5s bonds to 100.

3 in 3

1.  $5 \times 5 =$
2.  $2 \times \underline{\quad} = 22$
3. Sam has 6 bags of marbles, and each bag has 5 marbles inside. How many marbles does Sam have altogether?

Challenge - True or False

$$4 \times 5 = 10 \times 2$$



08.09.25

TBAT: To know multiple of 5s bonds to 100.

1	2	3	4	5	6	7	8	9	10
11	12	13	14	15	16	17	18	19	20
21	22	23	24	25	26	27	28	29	30
31	32	33	34	35	36	37	38	39	40
41	42	43	44	45	46	47	48	49	50
51	52	53	54	55	56	57	58	59	60
61	62	63	64	65	66	67	68	69	70
71	72	73	74	75	76	77	78	79	80
81	82	83	84	85	86	87	88	89	90
91	92	93	94	95	96	97	98	99	100

Let's recap our 5 times tables and count in our 5's to 100.

What do we notice that the numbers in the 5 times tables ends in?

08.09.25

TBAT: To know multiple of 5s bonds to 100.

Talk Partners:

**Why is this sum incorrect?**

$$65 + 45 = 100$$

**Explain this answer. (You can use your whiteboards to help you).**

**This sum is incorrect because...**

08.09.25

TBAT: To know multiple of 5s bonds to 100.

**Talk partners:**

**How can we solve this sum below?**

$$25 + \underline{\quad} = 100$$

**Clue - What multiple of 10  
do we round 25 up to?**

1	2	3	4	5	6	7	8	9	10
11	12	13	14	15	16	17	18	19	20
21	22	23	24	25	26	27	28	29	30
31	32	33	34	35	36	37	38	39	40
41	42	43	44	45	46	47	48	49	50
51	52	53	54	55	56	57	58	59	60
61	62	63	64	65	66	67	68	69	70
71	72	73	74	75	76	77	78	79	80
81	82	83	84	85	86	87	88	89	90
91	92	93	94	95	96	97	98	99	100



08.09.25

TBAT: To know multiple of 5s bonds to 100.

$$35 + 65 = 100$$

$$30 + 60 = 90$$

$$5 + 5 = 10$$

$$90 + 10 = 100$$

08.09.25

TBAT: To know multiple of 5s bonds to 100.

Talk partners (on  
whiteboards):

$$85 + \underline{\quad} = 100$$

$$55 + \underline{\quad} = 100$$

1	2	3	4	5	6	7	8	9	10
11	12	13	14	15	16	17	18	19	20
21	22	23	24	25	26	27	28	29	30
31	32	33	34	35	36	37	38	39	40
41	42	43	44	45	46	47	48	49	50
51	52	53	54	55	56	57	58	59	60
61	62	63	64	65	66	67	68	69	70
71	72	73	74	75	76	77	78	79	80
81	82	83	84	85	86	87	88	89	90
91	92	93	94	95	96	97	98	99	100

08.09.25

TBAT: To know multiple of 5s bonds to 100.

Independent task:

1.  $40 + \underline{\quad} = 100$

2.  $5 + \underline{\quad} = 100$

3.  $\underline{\quad} + 25 =$

4.  $100 - 35 =$

5. If Jess makes **85** cupcakes but she needs **100**. How many more does she need to make?

6. Ben has **100** stickers, and he gives **45** to his friends. How many does he have left?

Challenge

Sam has £1 in his pocket. He buys a chocolate bar that costs 55p. How much money does he have left?

Mastery

Count backwards in multiples of 5 to find your way through the maze.

start	75	60	65	30	25	20	
	70	55	50	35	10	15	
	65	60	30	40	25	10	
	50	55	50	45	20	5	end
	45	40	35	30	15	10	

Colour the correct path.

Mastery with greater depth

Fill in the missing numbers to correctly complete the statements.

The multiple of 5 before 70 is \_\_\_\_\_

The next multiple of 10 after 110 is \_\_\_\_\_

The next multiple of 5 after 75 is \_\_\_\_\_

The multiple of 10 before 140 is \_\_\_\_\_

The multiple of 5 before 115 is \_\_\_\_\_

Monday 8th September

TBAT: use horizontal and diagonal joins.

Arrive

Believe

Build

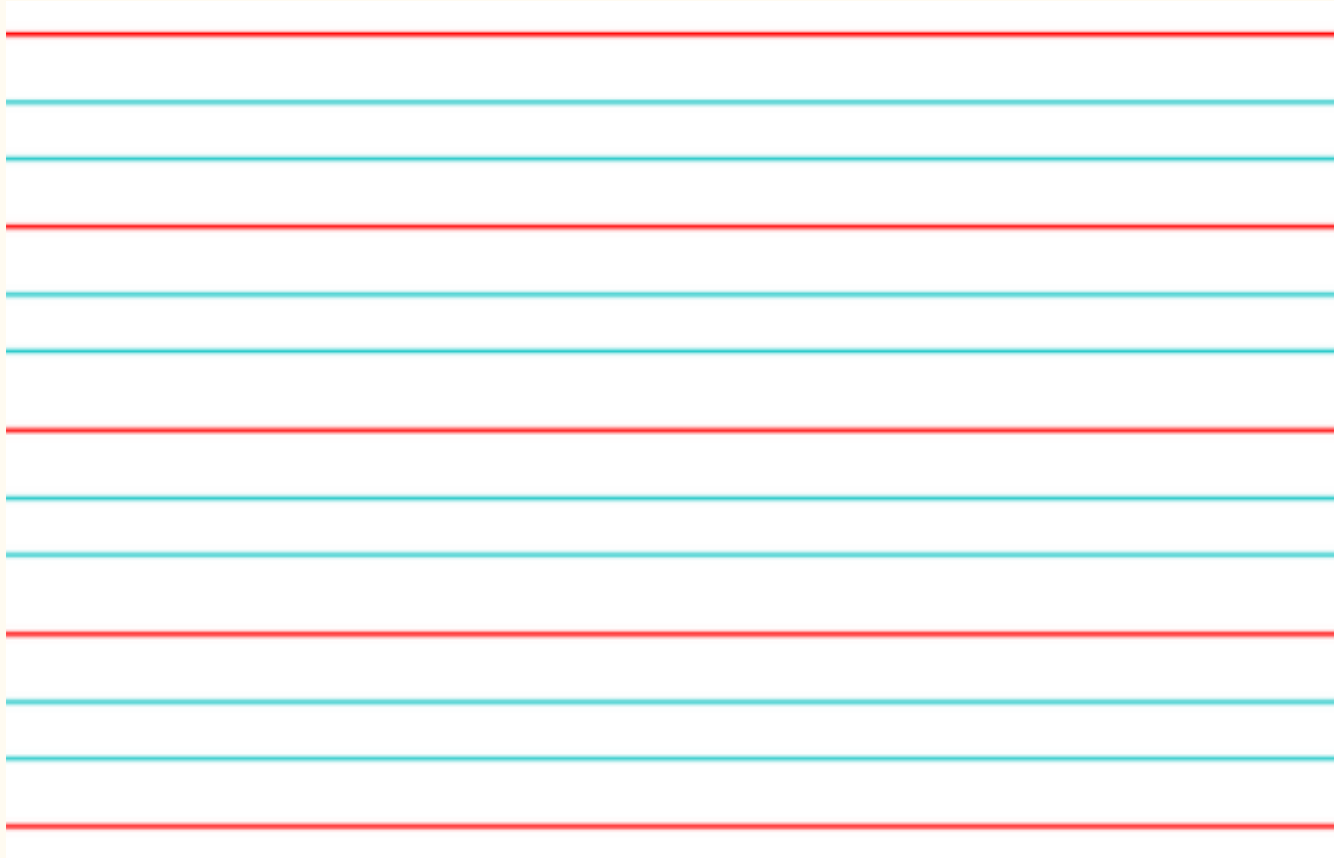
Earth

Minute

Recent

Special

Strange



Challenge - Use each Y3/4 word in a correctly punctuated sentence. Include a conjunction.



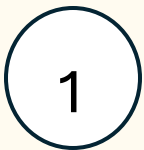
Box around – if you are unsure of what word to use



Underline a section (sentence/phrase) if you're not happy/want to go back and change it



Unsure of spelling – need to check



Using smaller number as footnotes



Monday 8th September

TBAT: retrieve information from a text.

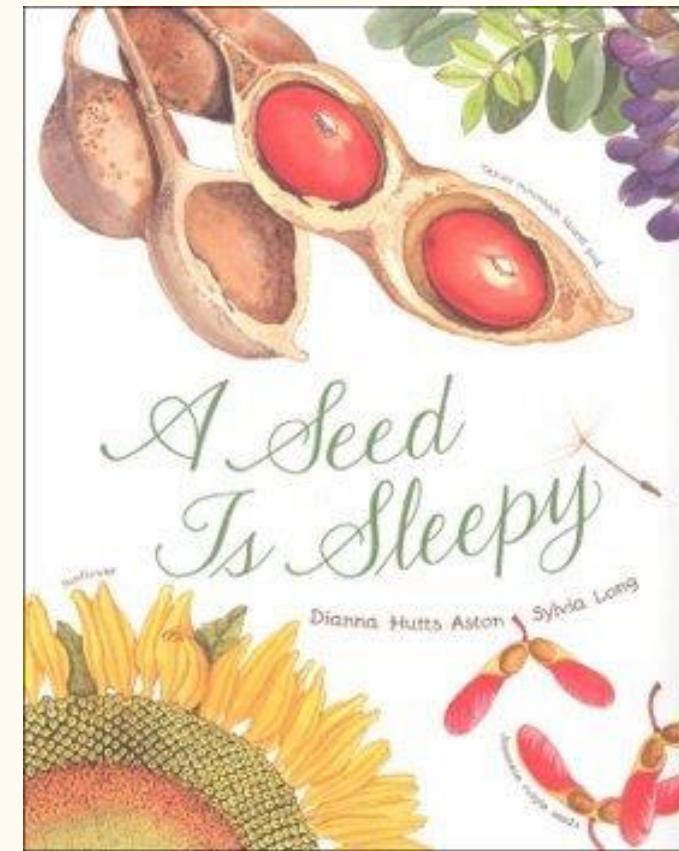
3 in 3

Most plants begin life as seeds. Plants form their seeds inside flowers or cones. In flowering plants, a fruit often surrounds the seeds.

Seeds need the right conditions to germinate or grow into a new plant. They need air, water, the right temperature, good soil conditions and the right amount of light.

1. What does germinate mean?
2. Name 2 things plants need to grow.
3. How do plants begin their life?

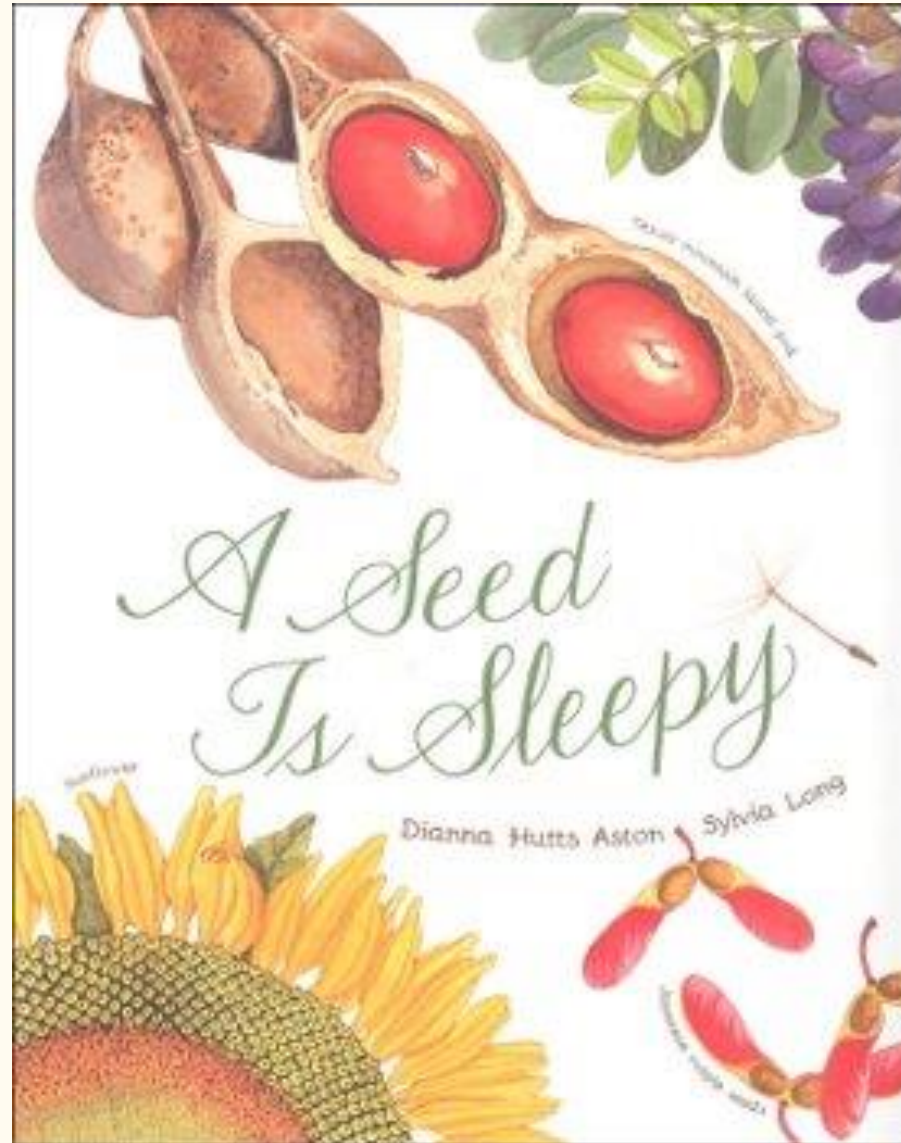
**Explain why commas need to be used in this sentence:** They need air, water, the right temperature, good soil conditions and the right amount of light.



Monday 8th September

TBAT: retrieve information from a text.

What do you  
think this  
book will be  
about?



What  
season of  
the year  
could this  
book be  
based on?

Monday 8th September

TBAT: retrieve information from a text.

*Words we will find in the text:*

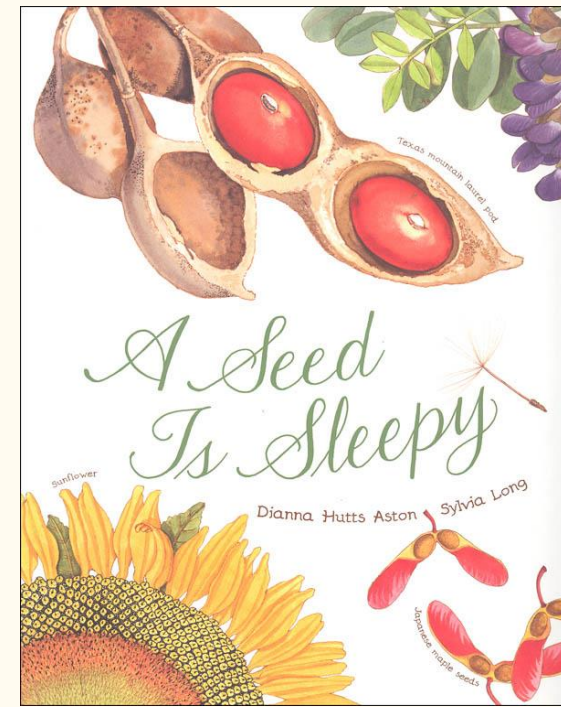
**beneath** - at a lower level or layer than

**secretive** - tending to act in secret or keep secrets

**flowering plants** - a plant that produces flowers

**cones** - a scaly structure of certain trees (as the pine or fir)

**dash** -run or travel somewhere in a great hurry.





Monday 8th September

TBAT: retrieve information from a text.

Multiple choice questions:

1. The seed is:

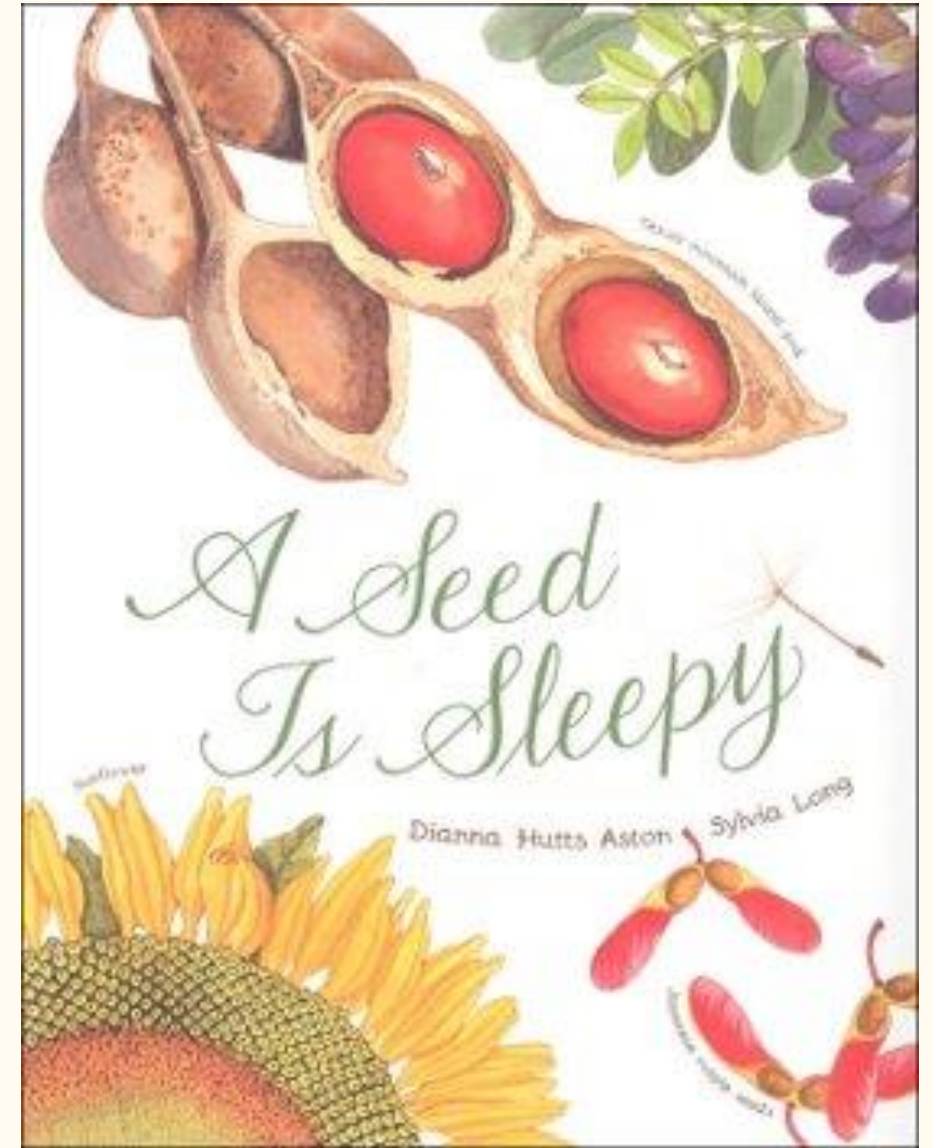
*energetic    snug    lazy*

2. The seed reveals itself:

*slowly    quickly    hurriedly*

3. Some seeds can be as small as a:

*grape    penny    freckle*

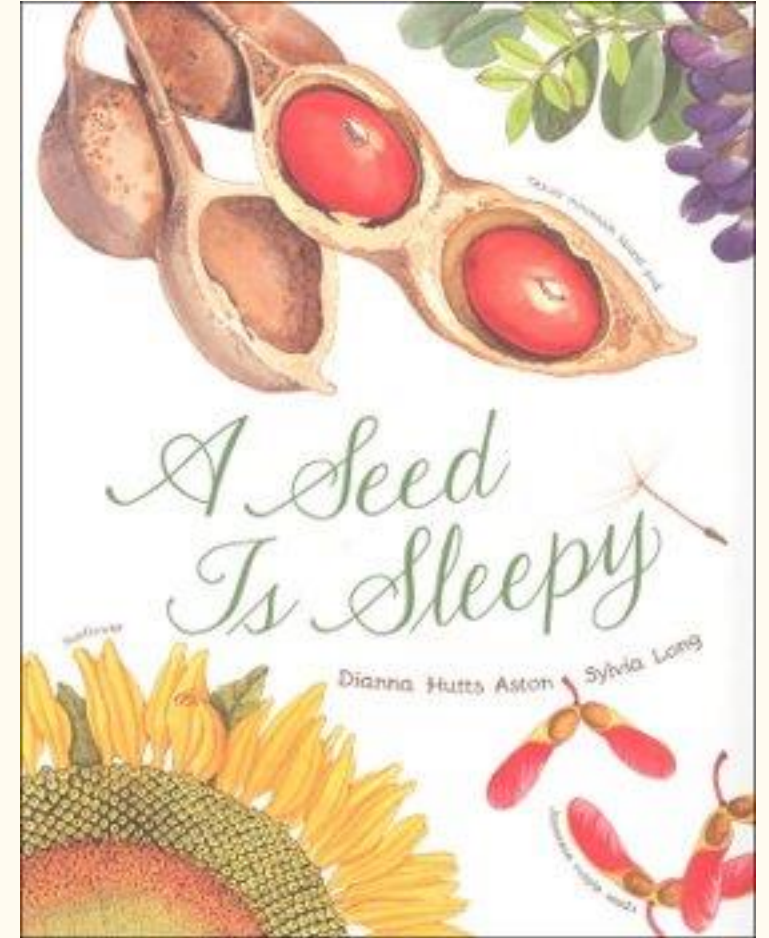


Monday 8th September

TBAT: retrieve information from a text.

### Retrieval questions

1. Name two places the seed is sleeping.
2. How long can it take for the Texas mountain laurel to show its purple blooms?
3. What percent of plants on earth are flowering plants?
4. What is the world's tallest tree?





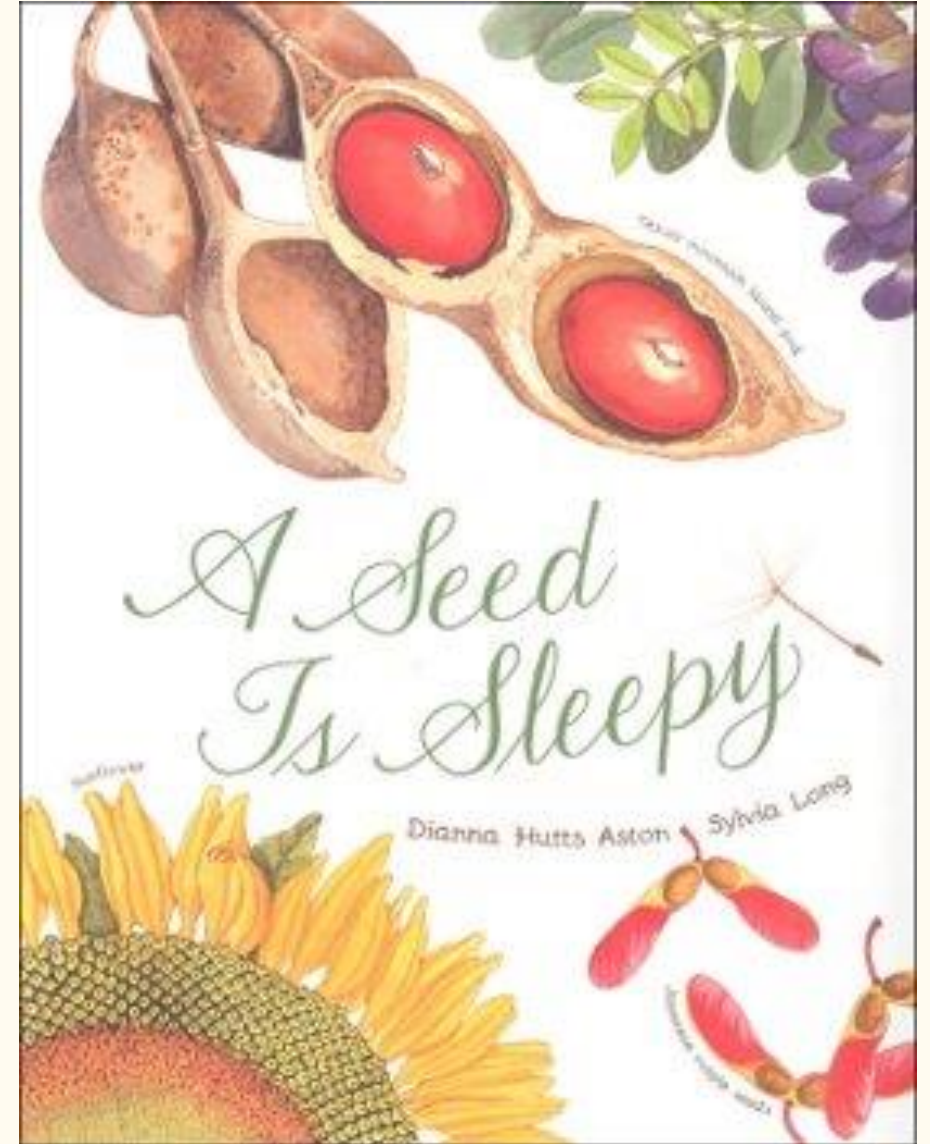
Monday 8th September

TBAT: retrieve information from a text.

### Challenge

Say whether the following statements are true or false:

Statement	True	False
Fruits come in all shapes, sizes and textures.		
Most seeds sleep for ten years.		
Most Redwood trees start out as seeds.		



Monday 8th September

Q: Where are mountains and hills in the UK?

3 in 3

Some of the highest mountains of the UK are found in Scotland. The tallest mountain in Scotland is Ben Nevis, which is 1345 metres high.

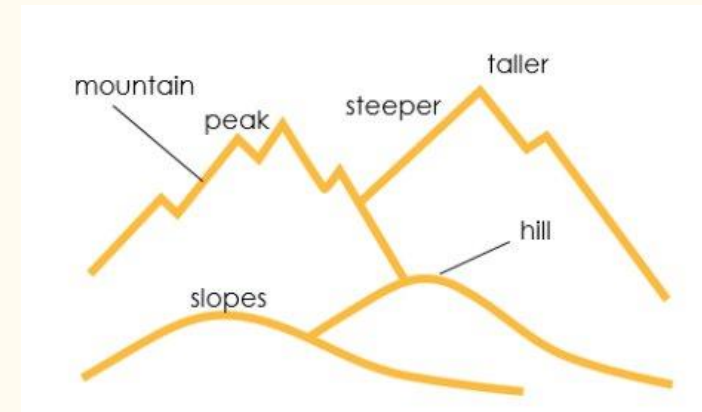
The tallest mountains in each country of the UK are: Ben Nevis in Scotland, Scafell Pike in England, Slieve Donard in Northern Ireland and Mount Snowdon in Wales. All mountains have a rocky landscape, are at least 600 metres high and have a rounded or sharp peak.

1. *Where is the tallest mountain in the UK?*
2. *How tall is the highest mountain?*
3. *What peak does a mountain have?*

*List synonyms for the word 'tallest'.*

Monday 8th September

Q: Where are Mountains and hills in the UK?



## Key vocabulary

**Mountain** - an area of land that rises above the land around it.

**Hill** - land higher than the surrounding area.

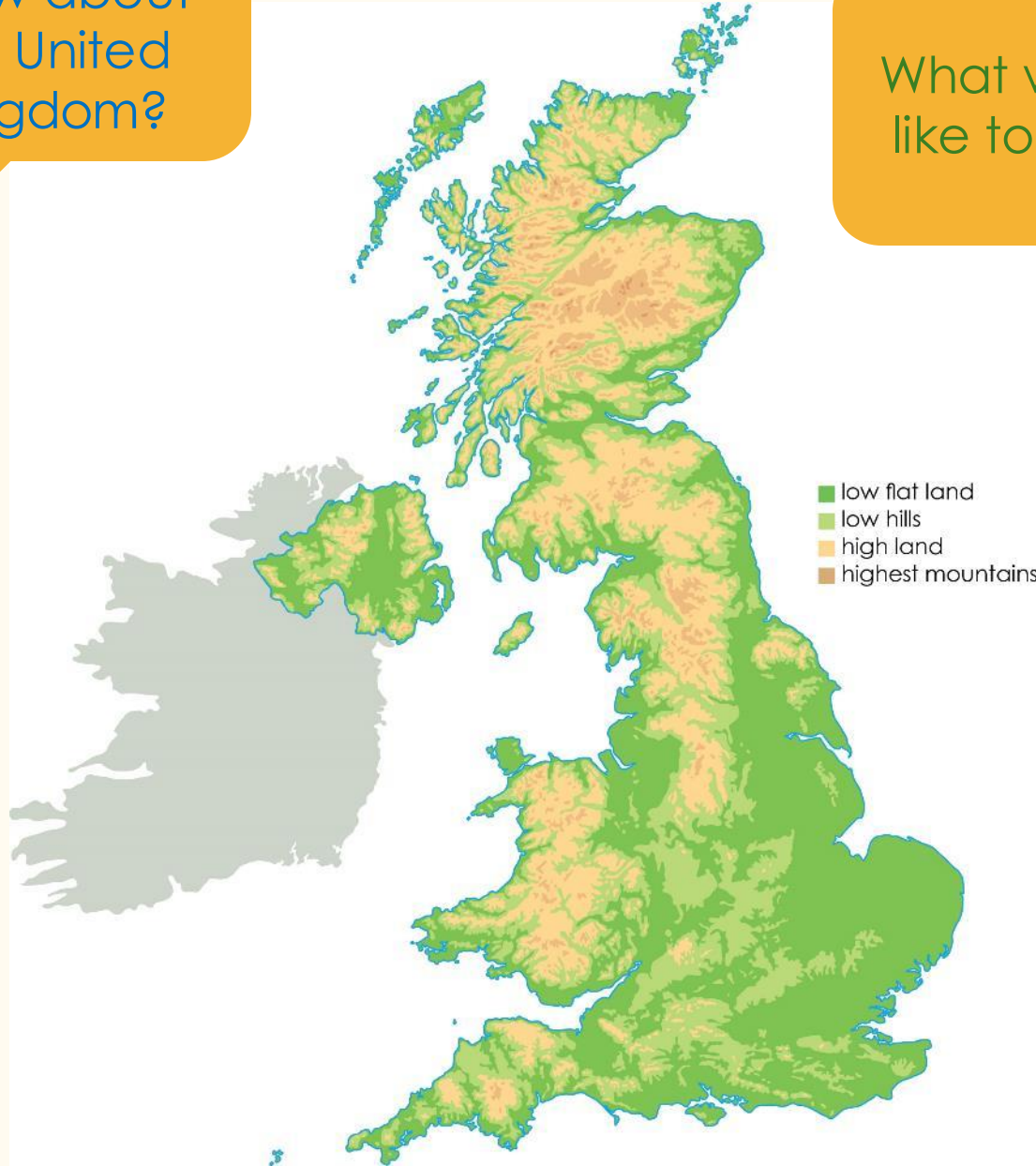
**Peak** - the highest point of a mountain.



**Slope** - a measure of the steepness of the side of a mountain.

**Steeper** - close to a vertical slope.

What do you  
know about  
the United  
Kingdom?



What would you  
like to find out?







The key term in this lesson is  
**mountain.**

A mountain is an area of land  
that rises above the land  
around it.

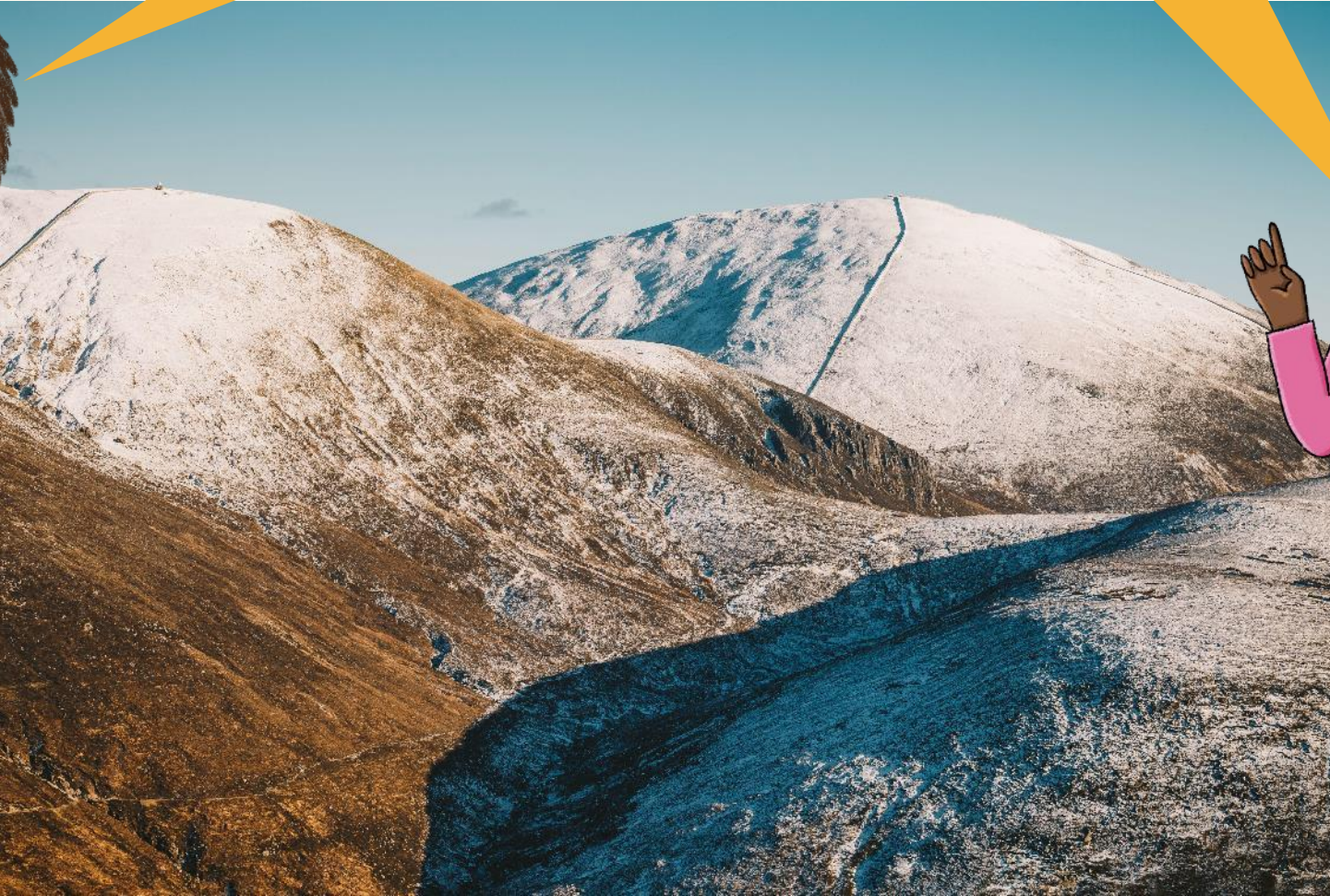




# Talk partners:

What are mountains and hills?

Do you know the difference between them?



## Lesson 1: Talk task

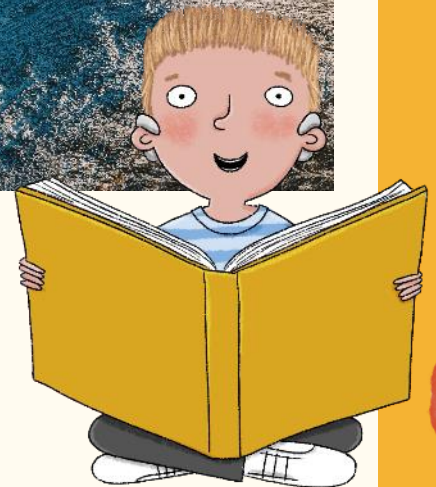
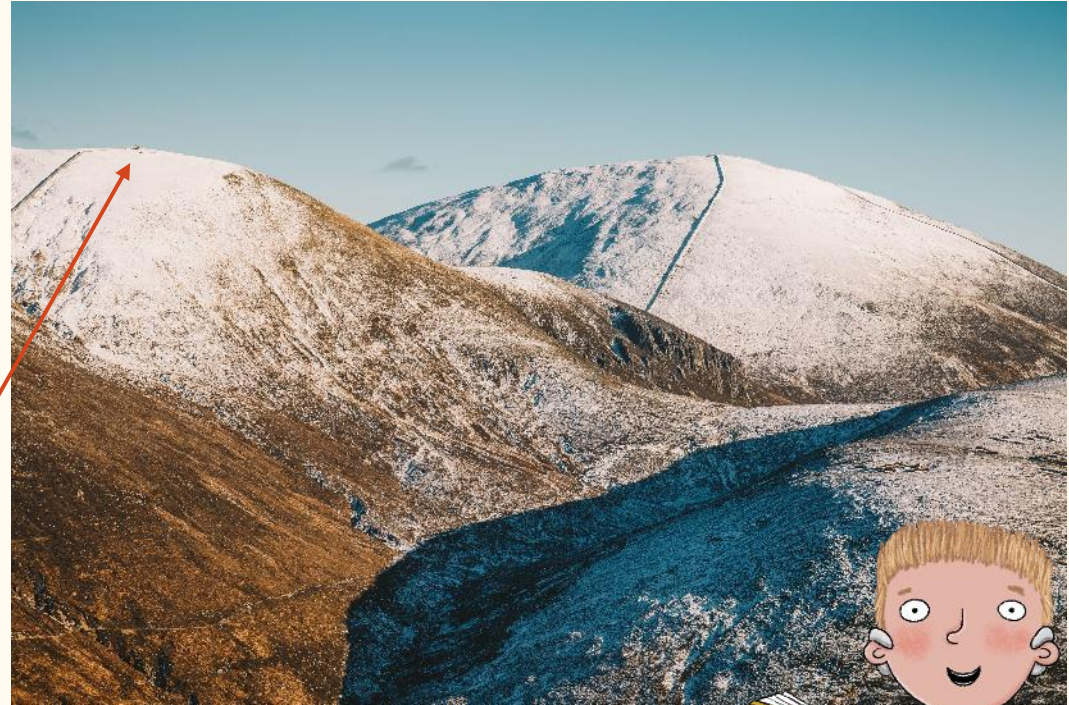




# What are mountains and hills?

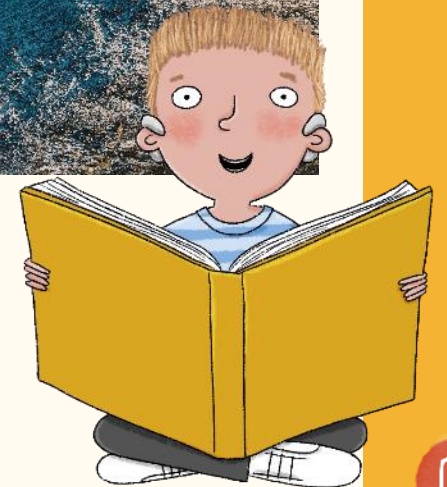
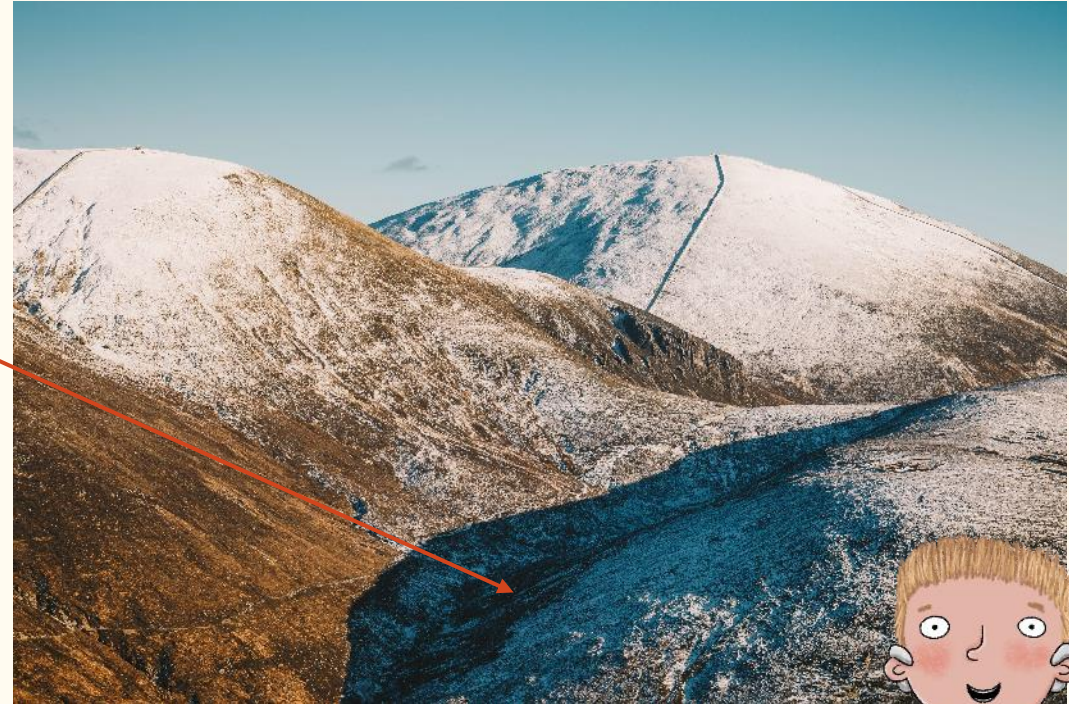
The land on Earth can be flat or raised. **Hills** and **mountains** are both higher than the land surrounding them.

Both hills and mountains have a highest point called a **peak**.



# What are mountains and hills?

Mountains are much **taller** and **steeper** than hills. The sides of hills **slope** more gradually than mountains. Areas of hills and mountains often have names, and some individual mountains also have names.

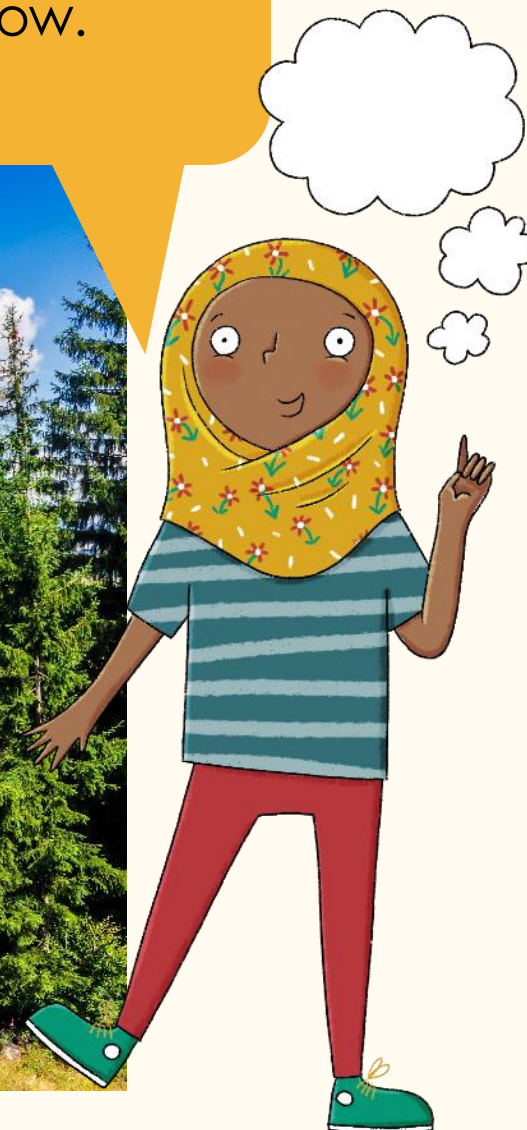
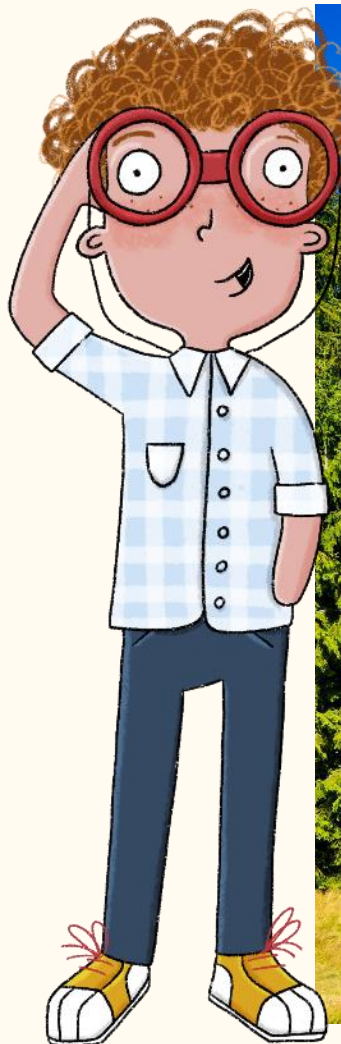
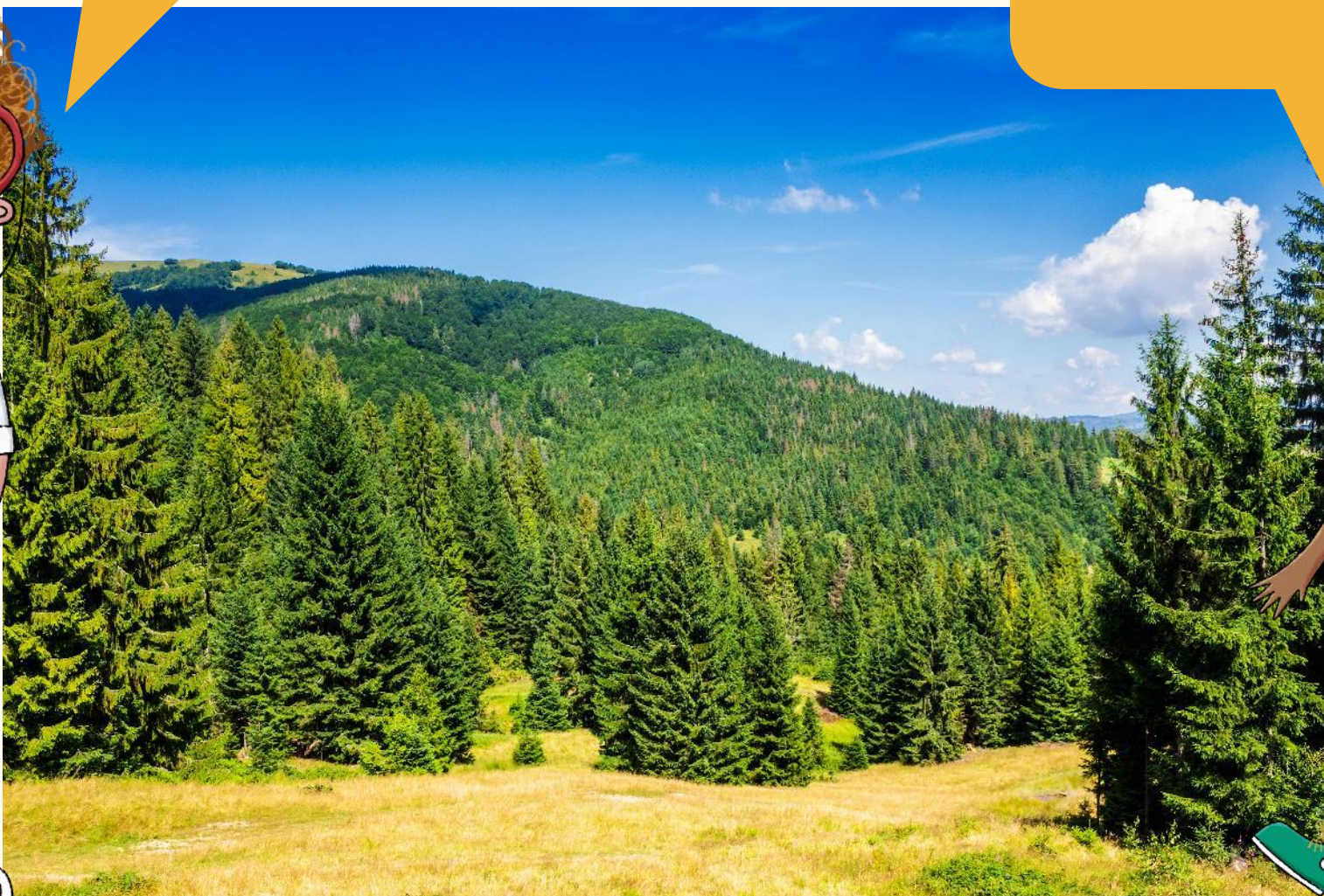




# Lesson 1: Talk task

Is this image  
of a hill or a  
mountain?

Explain how you  
know.

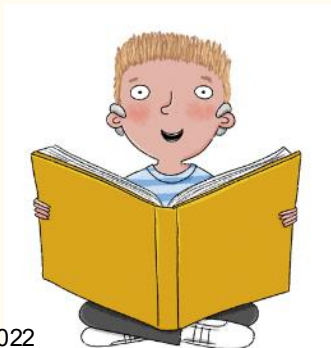
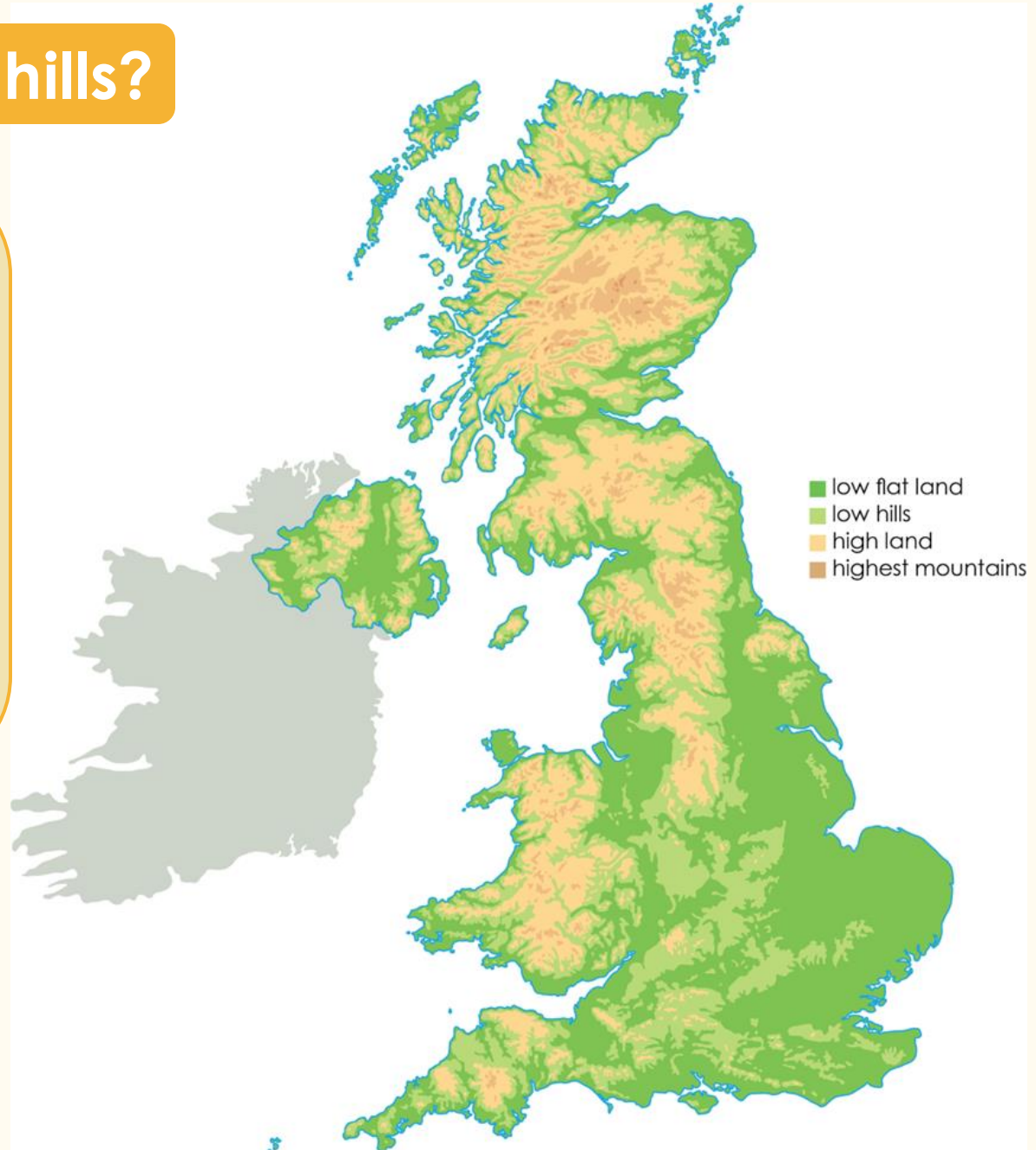




# Where are mountains and hills?

This map of the United Kingdom shows areas of hills and mountains (higher land) in the two shades of **brown**.

It shows areas of lower land in the shades of **green**.



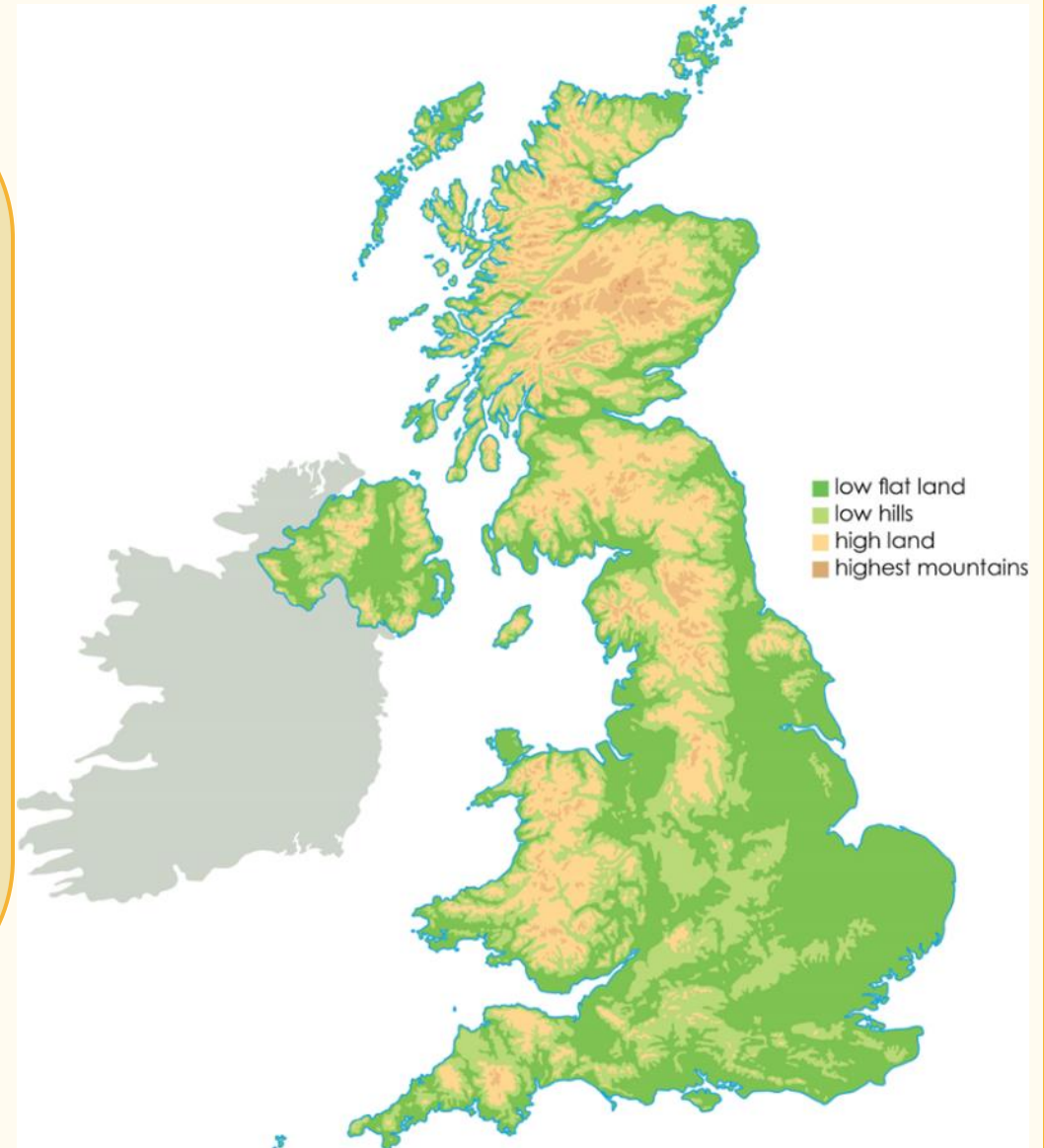


# Where are mountains and hills?

The highest areas of land are located in parts of the **north**, **west** and **south-west** of the United Kingdom.

The lowest lying areas of land are located in parts of the **east** and the **south-east** of the United Kingdom.

Can you find these areas on the map?

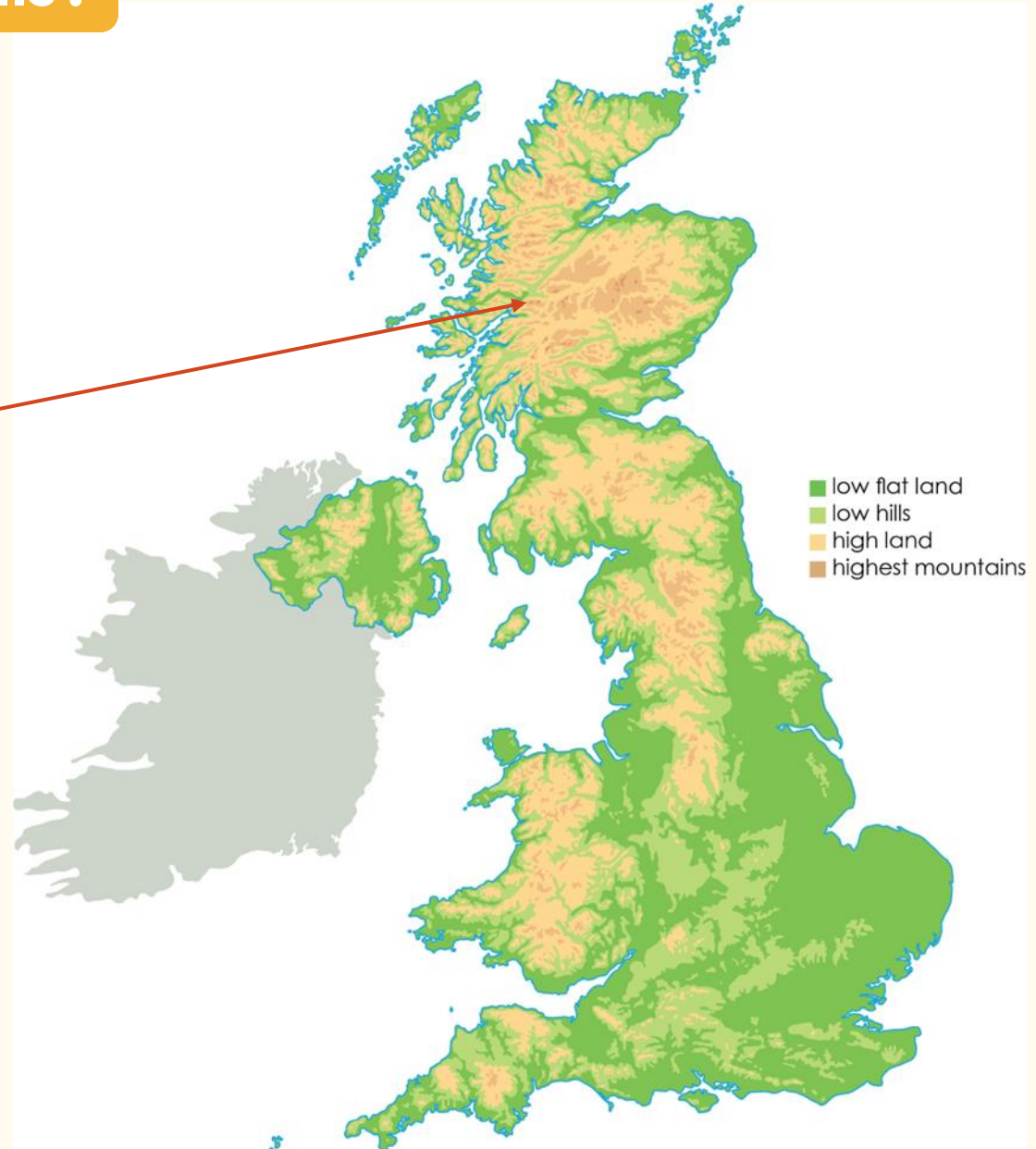


# Where are mountains and hills?

**Scotland** has the most mountains in the UK and the highest mountains in the UK.



**Ben Nevis**, in the Grampian Mountains, is the highest mountain in Scotland.



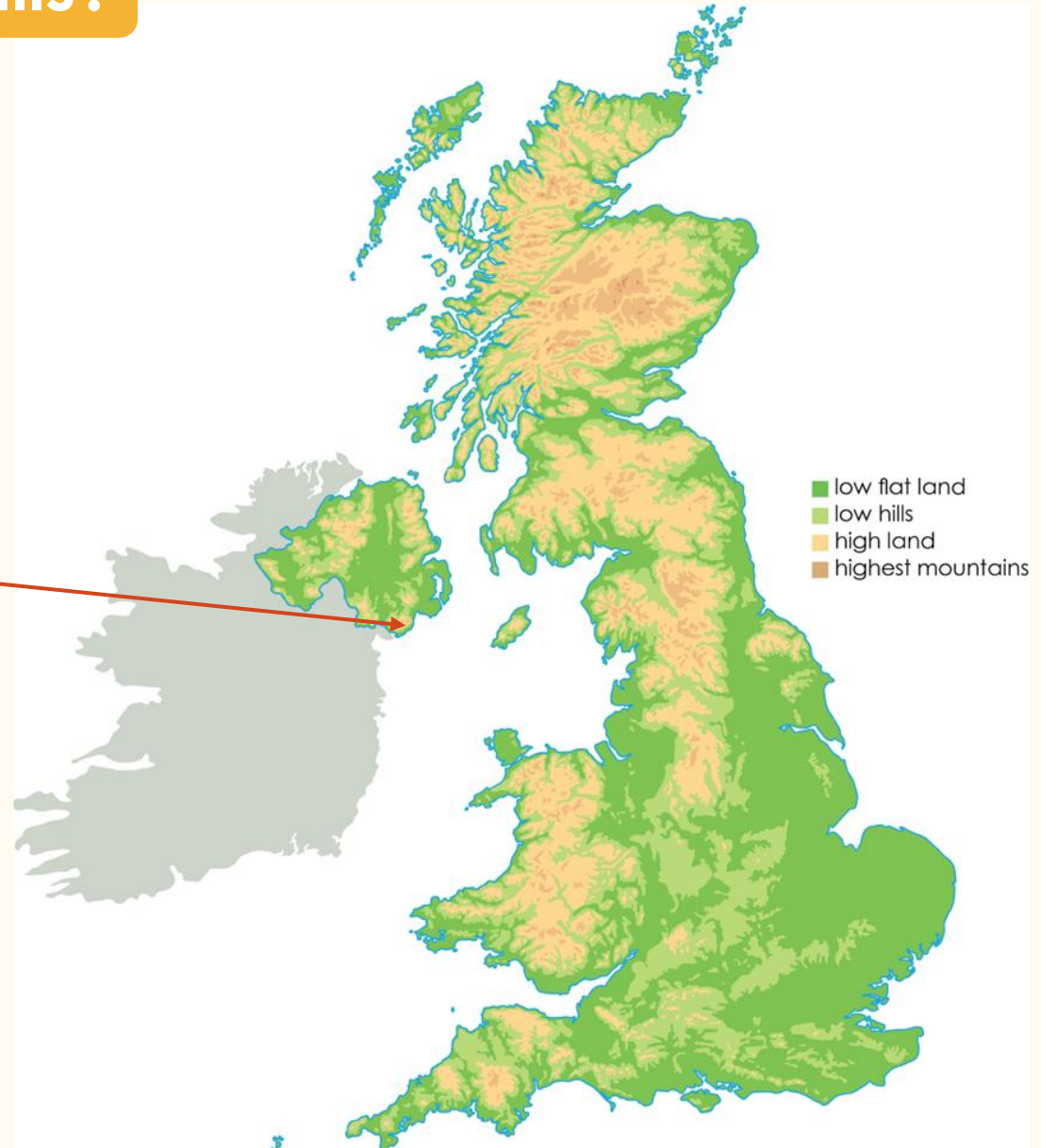


# Where are mountains and hills?

The highest mountain in **Northern Ireland** is **Slieve Donard**. It is located in the Mourne Mountains.



Compared to many other mountains, Slieve Donard is said to be easy to climb.

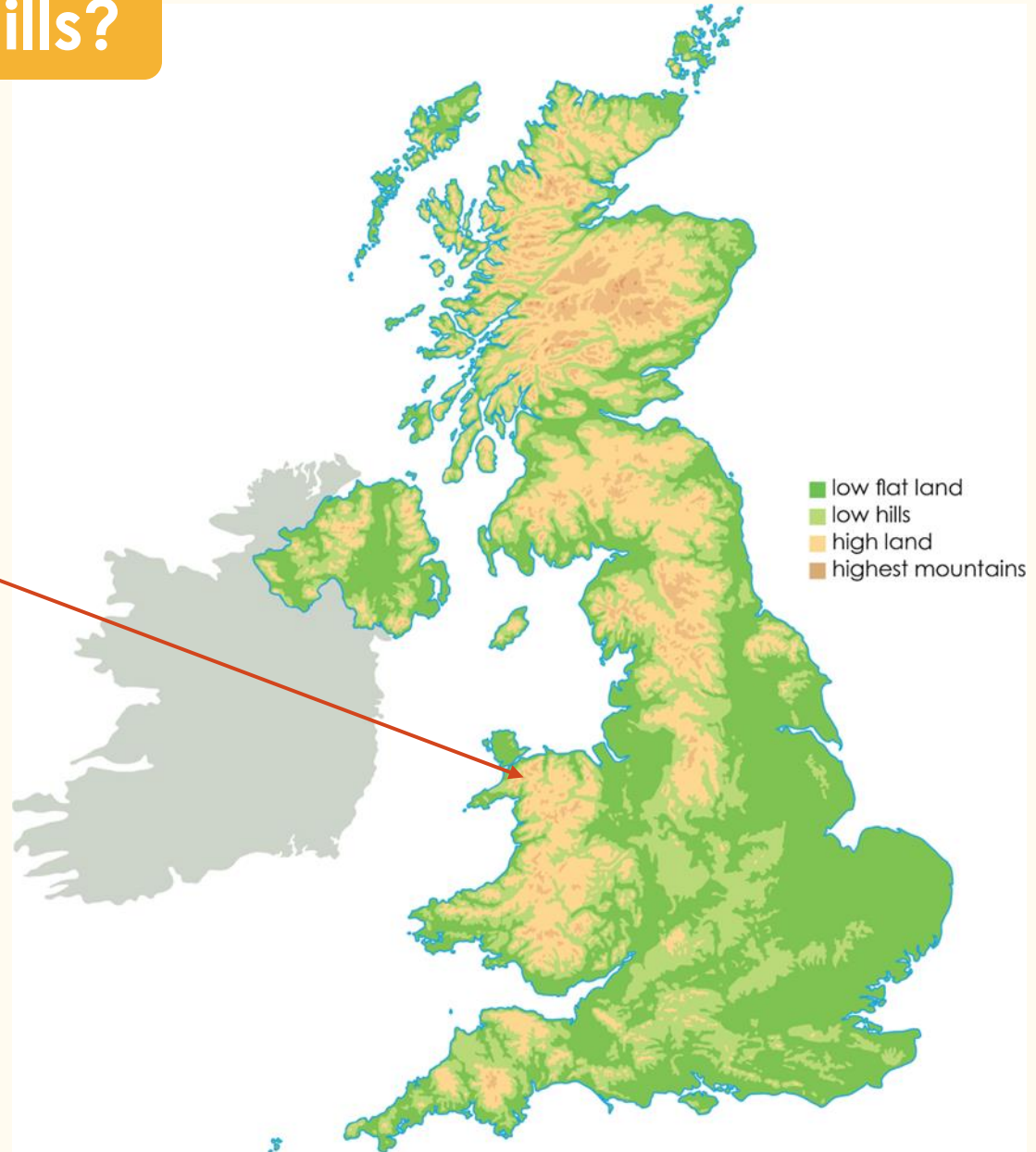


## Where are mountains and hills?

In **Wales**, there are many different mountain ranges.



The highest mountain in Wales is **Mount Snowdon** in Snowdonia National Park.



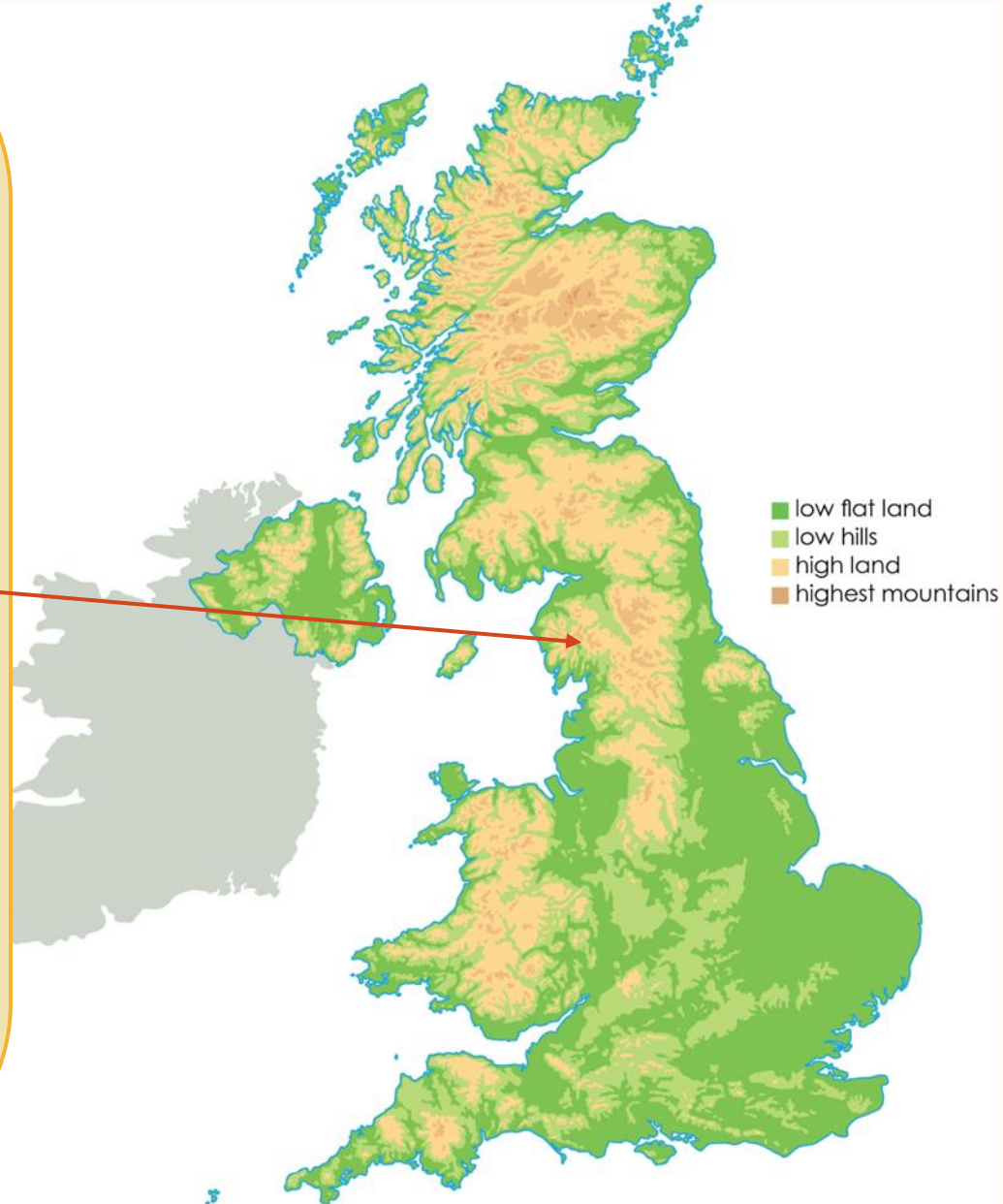


# Where are mountains and hills?

The highest mountains in England are in the **Lake District**, which is a National Park. This means it is a 'protected area'.



The highest mountain in England is called **Scafell Pike** in the Lake District National Park.





Monday 9th September

Q: Where are Mountains and hills in the UK?

Independent

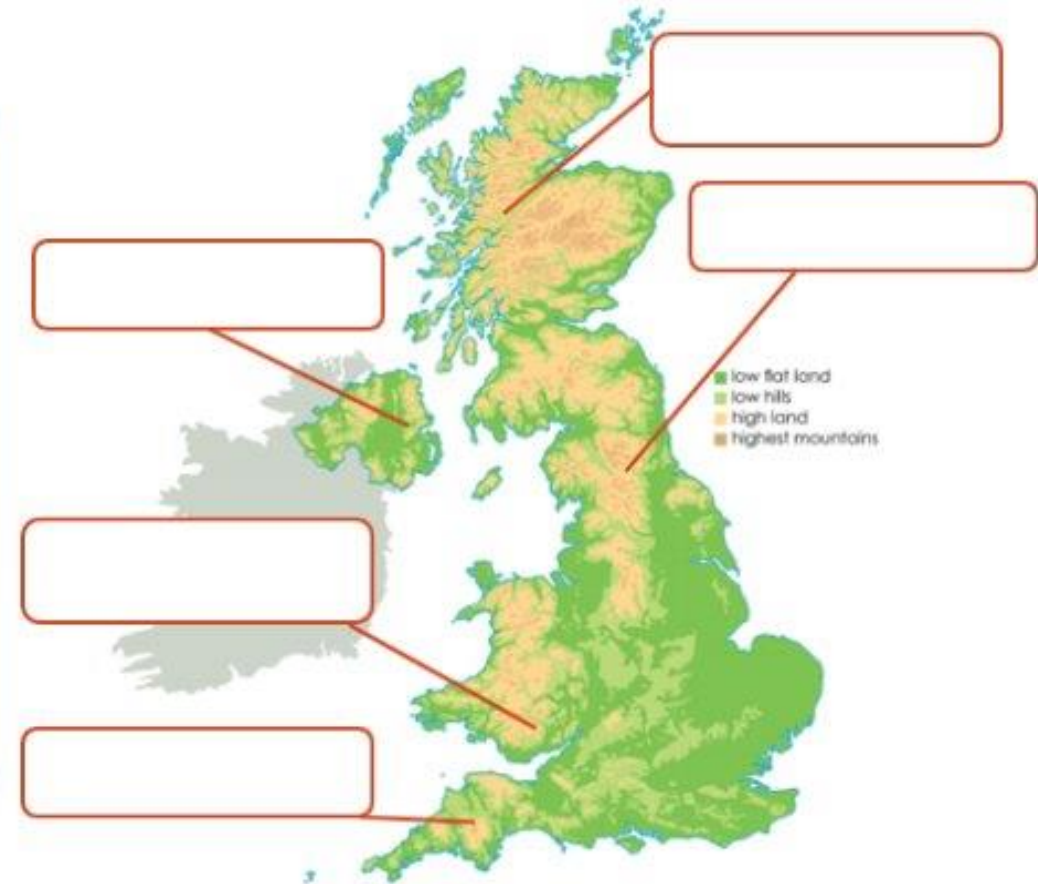
Use an atlas to find and label each of the mountains in each country.

A)

**Challenge**  
Explain how you know which two countries in the UK have the most mountains.

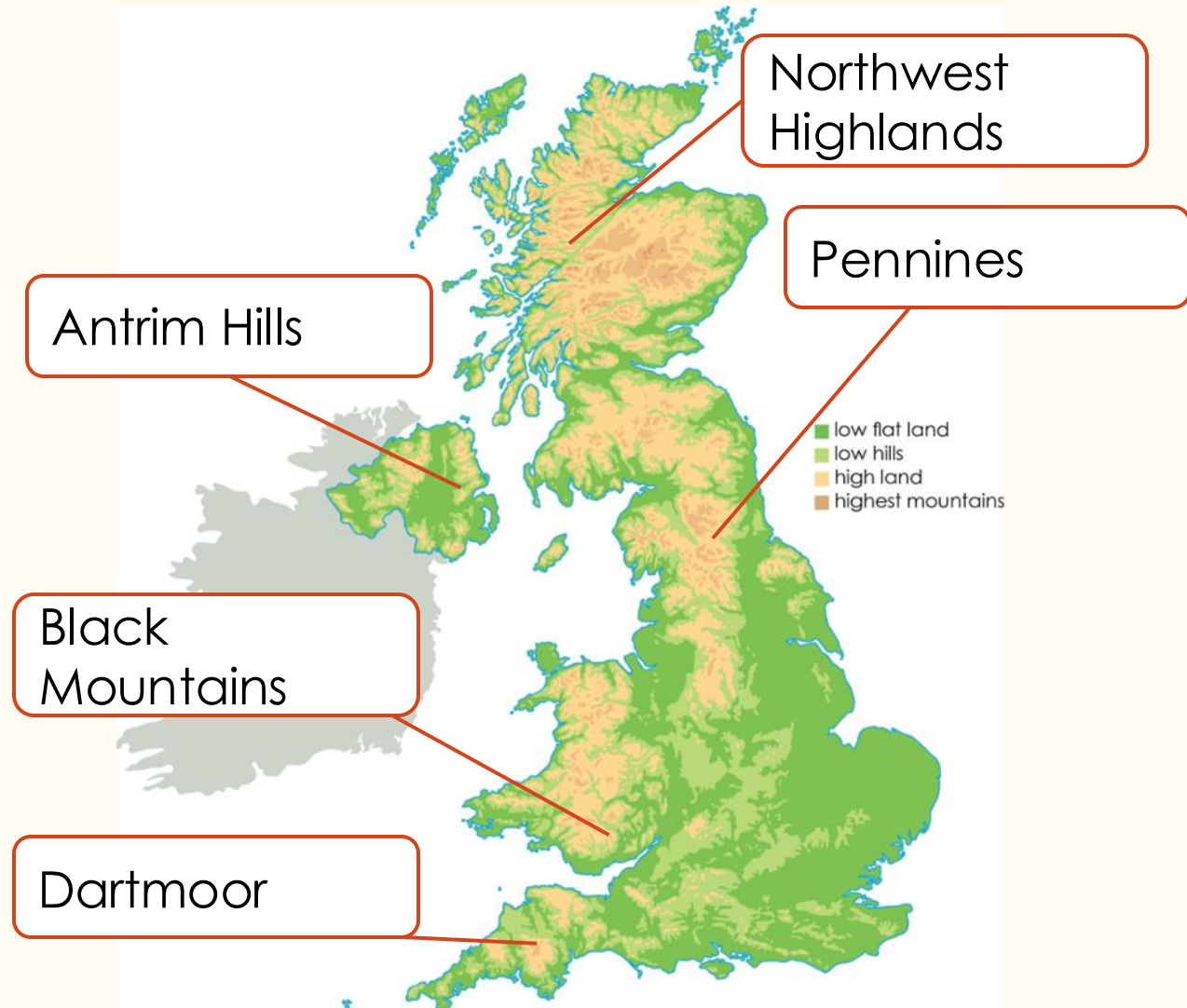
Northwest Highlands  
Pennines  
Black Mountains  
Dartmoor  
Antrim Hills

Find and label the highest mountain in each country:  
England, Scotland, Wales, and Northern Ireland.



Use an atlas to find and label the following hills and mountains on this map

Northwest Highlands  
Pennines  
Black Mountains  
Dartmoor  
Antrim Hills  
Find and label the  
highest mountain in  
each country:  
England, Scotland,  
Wales, and Northern  
Ireland.



Lundi 8 Septembre

TBAT: locate France and it's cities on a map.

[Dashboard \(languageangels.com\)](https://www.languageangels.com)

Lesson 1



Lundi 8 Septembre



CITIES

1. Paris
2. Lyon
3. Bordeaux
4. Marseille
5. Biarritz
6. Strasbourg
7. Nice
8. Toulouse
9. Nantes
10. Ajaccio





Answers

French

Monday 9th September