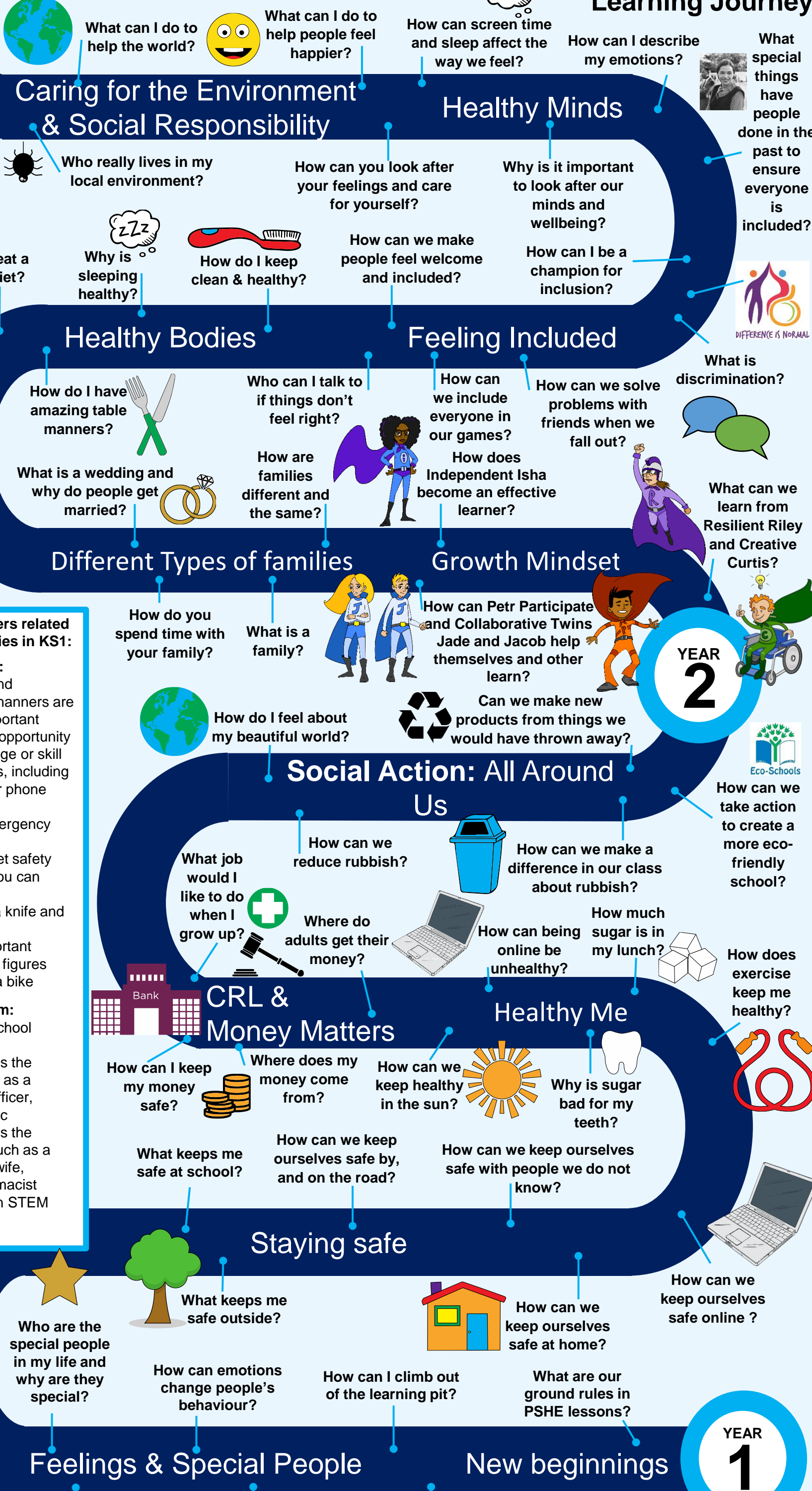


**KS1 PSHE Education Learning Journey**

**Students will start LKS2:**

- Knowing who is special in their lives, including their friends and family
- Having a basic understanding of healthy choices
- With an understanding of how to stay safe
- With a foundation of CRL and financial education
- Having had an experience of YSA



**Enrichment & careers related learning opportunities in KS1:**

**The OAT Advantage:**

- Know how to be kind
- Understand what manners are & why they are important
- #iwill social action opportunity
- Pass on a knowledge or skill
- Learn your address, including postcode, and your phone number
- How to contact emergency services
- Be aware of internet safety
- Make something you can share with others
- Know how to use a knife and fork
- Knowledge of important current & historical figures
- Learn how to ride a bike

**CRL encounters from:**

- A member of the school community
- A person that keeps the children safe, such as a firefighter, police officer, doctor or paramedic
- A person that keeps the children healthy, such as a doctor, nurse, midwife, nutritionist or pharmacist
- Females working in STEM
- A vicar or registrar

**YEAR 2**

**YEAR 1**

**What makes me special?**

**What are feelings and how can I show them?**

**What are the differences between Yr. R and Yr. 1?**

**Rules**

- 1.
- 2.